

ILS or LOC RWY 13R

DALLAS-FORT WORTH INTL (DFW)

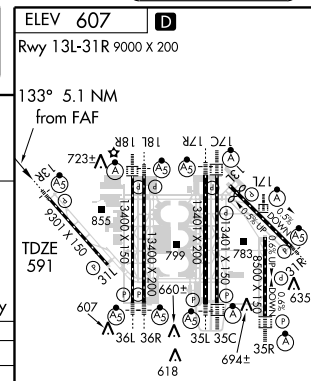
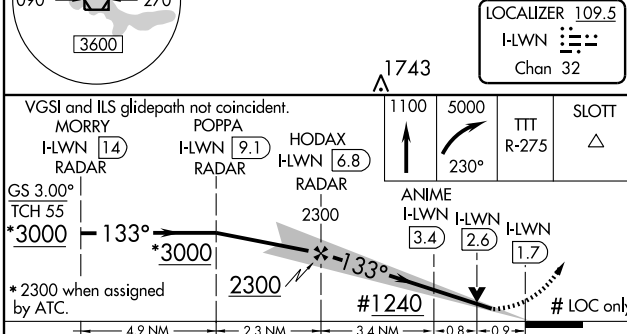
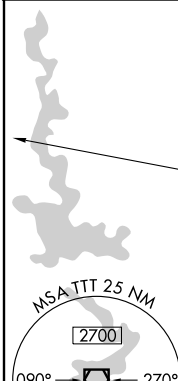
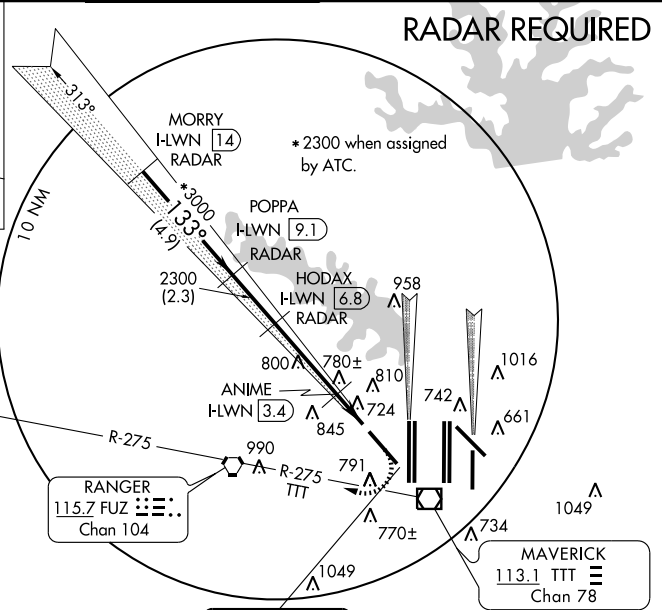
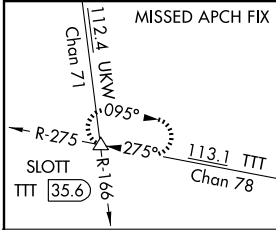
LOC/DME I-LWN 109.5 Chan 32	APP CRS 133°	Rwy Idg TDZE Apt Elev 9301 591 607
---	------------------------	--

**** DME or RADAR required.**



MISSED APPROACH: Climb to 1100, then climbing right turn to 5000 via heading 230° and TTT R-275 to SLOTT Int/TTT 35.6 DME and hold.

ATIS ARR 123.775 DEP 135.925	REGIONAL APP CON 118.1 133.15	DFW TOWER 126.55 127.5 EAST 124.15 134.9 WEST	GND CON 121.65 121.8 EAST 121.85 WEST	CLNC DEL 128.25
--	---	---	---	---------------------------



CATEGORY	A	B	C	D
S-ILS 13R	791/18		200 (200-½)	
S-LOC 13R**	1240/24	649 (700-½)	1240/60 649 (700-¼)	1240-1½ 649 (700-½)
ANIME FIX MINIMUMS				
S-LOC 13R	960/24	369 (400-½)	960/40 369 (400-¾)	

HIRL all Rwys					
REL Rwys 13L and 31L					
TDZ/CL all Rwys except 13L, 17C and 31L					
FAF to MAP 5.1 NM					
Knots	60	90	120	150	180
Min:Sec	5:06	3:24	2:33	2:02	1:42

SC-2, 11 MAR 2010 to 08 APR 2010

SC-2, 11 MAR 2010 to 08 APR 2010