

HILLSBORO, OHIO

AL-6045 (FAA)

NDB or GPS RWY 23

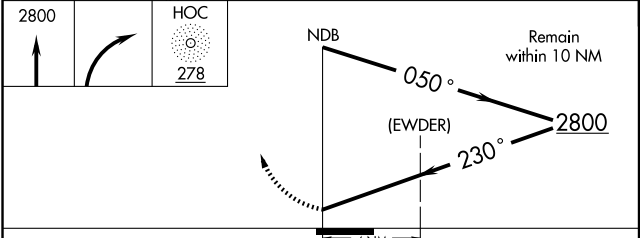
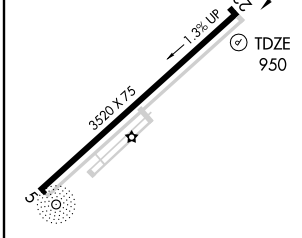
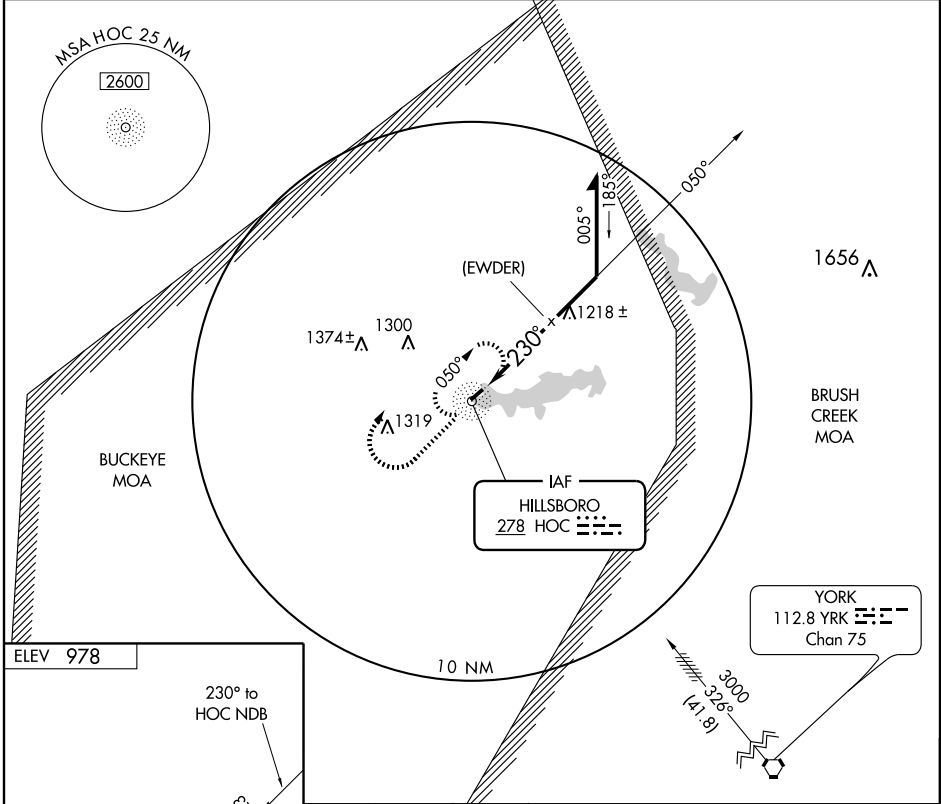
HILLSBORO/HIGHLAND COUNTY (HOC)

NDB HOC 278	APP CRS 230°	Rwy Idg TDZE Apt Elev	3520 950 978
-----------------------	------------------------	-----------------------------	---

▽ Use Cincinnati Lunken Field altimeter setting. **MISSED APPROACH:** Climb to 2800 then right turn direct HOC NDB and hold.

▲ NA

AWOS-3 118.175	INDIANAPOLIS CENTER 134.0 290.5	UNICOM 123.05 (CTAF) 0
--------------------------	---	----------------------------------



REIL Rwy 23 0	MIRL Rwy 5-23 0				
Knots	60	90	120	150	180
Min:Sec					
CATEGORY	A	B	C	D	
S-23	1760-1 810 (800-1)	1760-1¼ 810 (800-1¼)	1760-2¼ 810 (800-2¼)	NA	
CIRCLING	1760-1 782 (800-1)	1760-1¼ 782 (800-1¼)	1760-2¼ 782 (800-2¼)	NA	

HILLSBORO, OHIO
Amdt 4 03023

39°11'N-83°32'W

HILLSBORO/HIGHLAND COUNTY (HOC)
NDB or GPS RWY 23

EC-2, 19 NOV 2009 to 17 DEC 2009

EC-2, 19 NOV 2009 to 17 DEC 2009