

HILLSBORO, OHIO

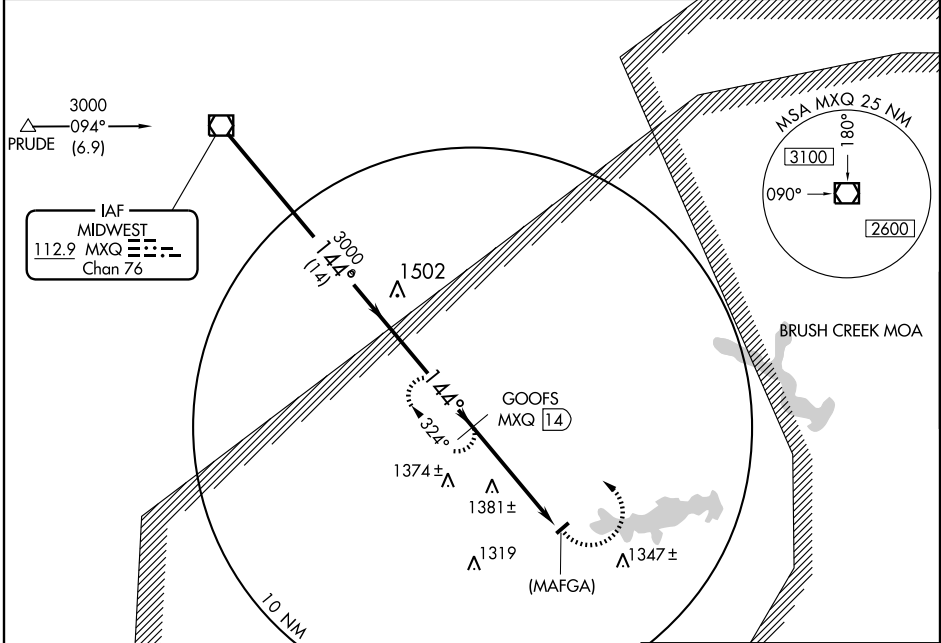
AL-6045 (FAA)

VOR/DME MXQ <b>112.9</b> Chan <b>76</b>	APP CRS <b>144°</b>	Rwy Idg TDZE Apt Elev	<b>N/A</b> <b>N/A</b> <b>978</b>
---	------------------------	-----------------------------	--

**VOR/DME or GPS-A**  
HILLSBORO/HIGHLAND COUNTY (HOC)

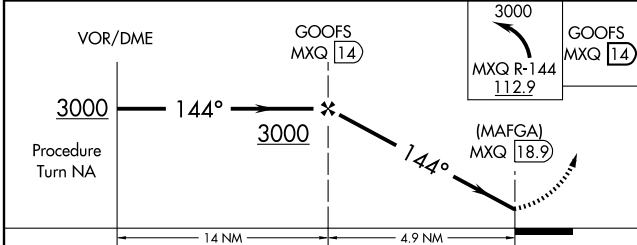
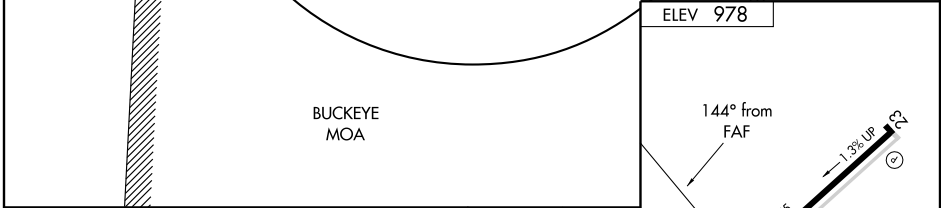
**▲** Use Cincinnati Lunken Field altimeter setting.  
**▲** NA MISSED APPROACH: Climbing left turn to 3000 via MXQ R-144 to GOOFS 1.4 DME and hold.

AWOS-3 <b>118.175</b>	INDIANAPOLIS CENTER <b>135.575 290.5</b>	UNICOM <b>123.05 (CTAF)</b>
--------------------------	---	--------------------------------



EC-2, 11 MAR 2010 to 08 APR 2010

EC-2, 11 MAR 2010 to 08 APR 2010



CATEGORY	A	B	C	D	Knots	60	90	120	150	180
CIRCLING	2000-1¼ 1022 (1100-1¼)	2000-1½ 1022 (1100-1½)	2000-3 1022 (1100-3)	NA	Min:Sec					

HILLSBORO, OHIO  
Amdt 1B 10042

39°11'N-83°32'W

HILLSBORO/HIGHLAND COUNTY (HOC)  
**VOR/DME or GPS-A**