

LOC/DME I-CFU 108.3 Chan 20	APP CRS 331°	Rwy Idg TDZE Apt Elev 5500 218 237
--	------------------------	--

ILS or LOC RWY 33

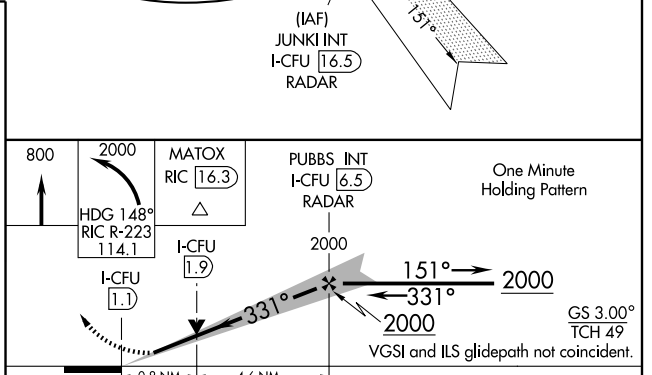
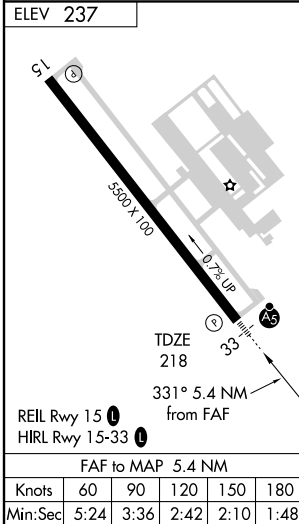
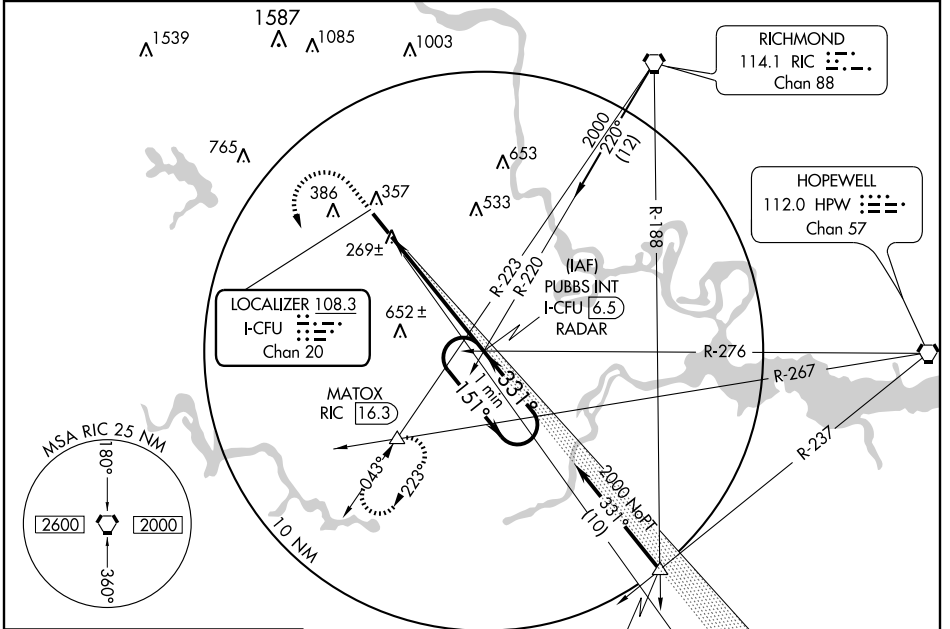
RICHMOND/CHESTERFIELD COUNTY (FCI)

▼ For inoperative MALSR, increase S-LOC 33 visibility Cat D to 1. If local altimeter setting not received, use Richmond Infil altimeter setting and increase all DAs/MDAs 40 feet. VDP NA when using Richmond Infil altimeter setting.

▲ NA

MALSR MISSED APPROACH: Climb to 800, then climbing left turn to 2000 via heading 148° and RIC R-223 to MATOX INT/RIC 16.3 DME and hold.

AWOS-3 128.625	POTOMAC APP CON 134.7 307.2	CLNC DEL 124.6	UNICOM 123.050 (CTAF) ①
--------------------------	---------------------------------------	--------------------------	--



CATEGORY	A	B	C	D
S-ILS 33	418-½		200 (200-½)	
S-LOC 33	520-½		302 (300-½)	
			520-¾ 302 (300-¾)	
CIRCLING	720-1		483 (500-1)	
			720-1½ 483 (500-1½)	
			800-2 563 (600-2)	

ILS or LOC RWY 33

NE-3, 19 NOV 2009 to 17 DEC 2009

NE-3, 19 NOV 2009 to 17 DEC 2009