

RICHMOND, VIRGINIA

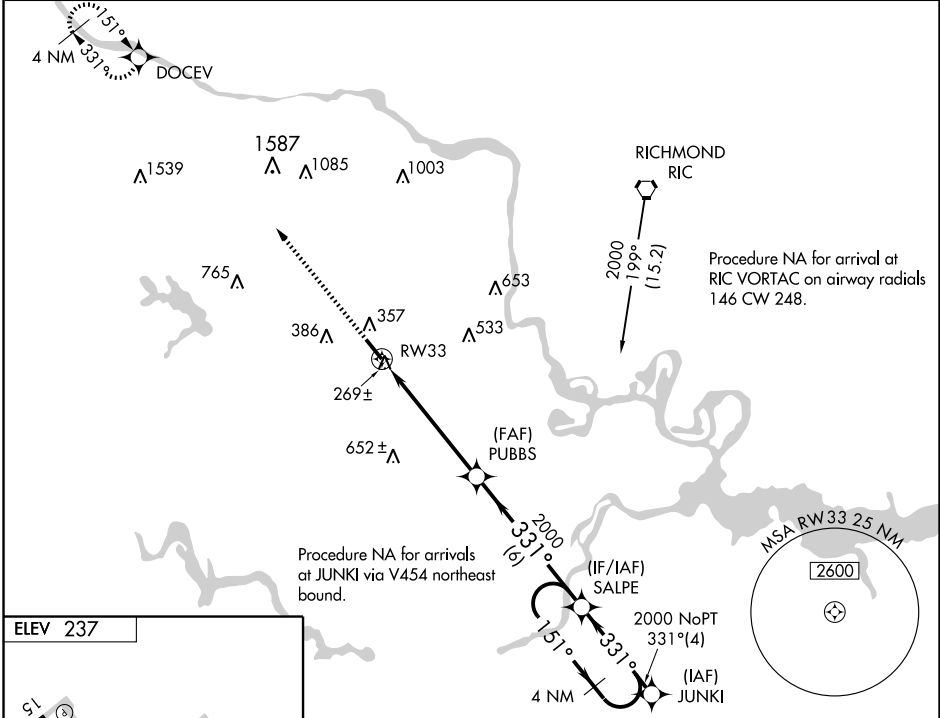
AL-6066 (FAA)

WAAS CH <b>56221</b> <b>W33A</b>	APP CRS <b>331°</b>	Rwy Idg TDZE Apt Elev	<b>5500</b> <b>218</b> <b>237</b>
--	------------------------	-----------------------------	---

# RNAV (GPS) RWY 33

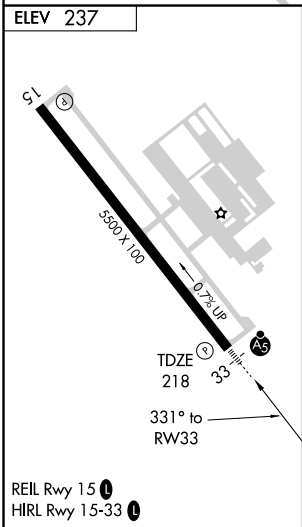
RICHMOND/CHESTERFIELD COUNTY (F'CI)

<p><b>▼</b> For inoperative MALSR increase LPV all Cats visibility to 1. If local altimeter setting not received, use Richmond Intl altimeter setting and increase all DAs/MDAs 40 feet. VDP and Baro-VNAV NA when using Richmond Intl altimeter setting. For uncompensated Baro-VNAV systems LNAV/VNAV NA below -1.5°C (5°F) or above 48°C (118°F). DME/DME RNP-0.3 NA.</p> <p><b>▲ NA</b></p>	<p><b>MALSR</b></p>	<p><b>MISSED APPROACH:</b> Climb to 3000 direct DOCEV and hold.</p>	
<p>AWOS-3 <b>128.625</b></p>	<p>POTOMAC APP CON <b>134.7 307.2</b></p>	<p>CLNC DEL <b>124.6</b></p>	<p>UNICOM <b>123.050</b> (CTAF) <b>①</b></p>



NE-3, 19 NOV 2009 to 17 DEC 2009

NE-3, 19 NOV 2009 to 17 DEC 2009



3000	DOCEV	VGS1 and RNAV glidepath not coincident.		4 NM Holding Pattern
		PUBBS	SALPE	
		*1.5 NM to RW33	331°	2000
		*LNAV only	2000	GS 3.00° TCH 49
		1.5	3.9 NM	6 NM
CATEGORY	A	B	C	D
LPV DA		511-1/2	293 (300-1/2)	
LNAV/VNAV DA		599-1	381 (400-1)	
LNAV MDA	720-1/2	502 (500-1/2)	720-1	502 (500-1)
CIRCLING	720-1	483 (500-1)	720-1 1/2 483 (500-1 1/2)	800-2 563 (600-2)

RICHMOND, VIRGINIA  
Orig-A 08325

RICHMOND/CHESTERFIELD COUNTY (F'CI)  
37°24'N - 77°32'W  
**RNAV (GPS) RWY 33**