

RNAV (GPS) RWY 15

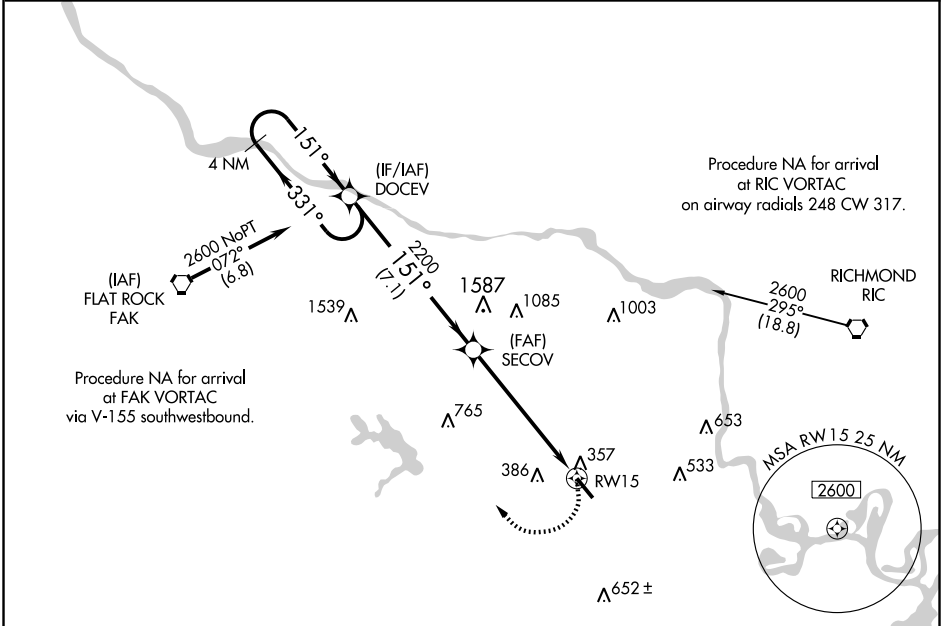
RICHMOND/CHESTERFIELD COUNTY (F'CI)

APP CRS 151°	Rwy Idg 5500
	TDZE 237
	Apt Elev 237

▽ If local altimeter setting not received, use Richmond Intl altimeter setting and increase all MDAs 40 feet. DME/DME RNP-0.3 NA.
△ NA VDP NA when using Richmond Intl altimeter setting.

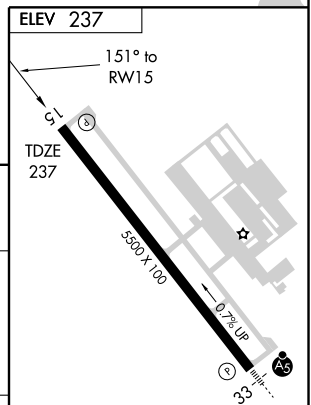
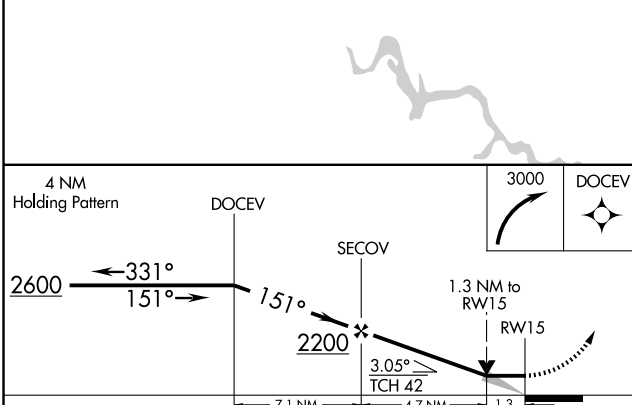
MISSED APPROACH: Climbing right turn to 3000 direct DOCEV and hold.

AWOS-3 128.625	POTOMAC APP CON 134.7 307.2	CLNC DEL 124.6	UNICOM 123.050 (CTAF) ①
--------------------------	---------------------------------------	--------------------------	------------------------------------------



NE-3, 19 NOV 2009 to 17 DEC 2009

NE-3, 19 NOV 2009 to 17 DEC 2009



CATEGORY	A	B	C	D
LNAV MDA	680-1 443 (500-1)		680-1½ 443 (500-1½)	680-1½ 443 (500-1½)
CIRCLING	720-1 483 (500-1)		720-1½ 483 (500-1½)	800-2 563 (600-2)

REIL Rwy 15 **①**
 HIRL Rwy 15-33 **①**