

DICKSON, TENNESSEE

AL-6085 (FAA)

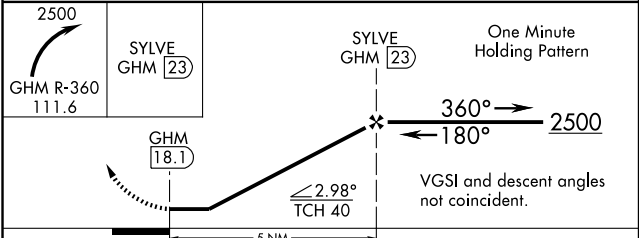
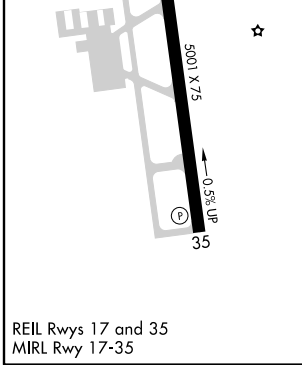
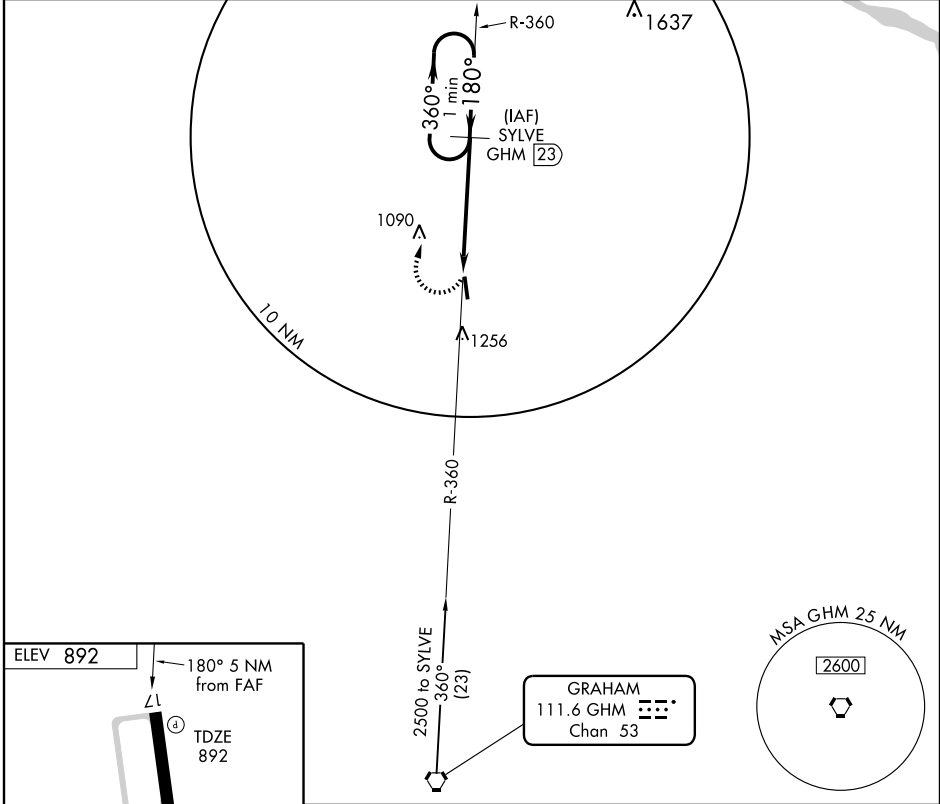
VORTAC GHM 111.6 Chan 53	APP CRS 180°	Rwy Idg TDZE Apt Elev	5001 892 892
--	------------------------	-----------------------------	---

VOR/DME RWY 17

DICKSON MUNI (M02)

NA MISSED APPROACH: Climbing right turn to 2500 via R-360 GHM VORTAC to SYLVE 23 DME and hold.

AWOS-3 123.875	MEMPHIS CENTER 125.85 381.4	UNICOM 122.8 (CTAF)
--------------------------	---------------------------------------	-------------------------------



CATEGORY	A	B	C	D
S-17	1400-1	508 (600-1)	1400-1½	508 (600-1½)
CIRCLING	1400-1	508 (600-1)	1560-1¾ 668 (700-1¾)	1560-2 668 (700-2)

DICKSON, TENNESSEE
Amdt 4C 09127

36° 08'N-87° 26'W

DICKSON MUNI (M02)

VOR/DME RWY 17

SE-1, 19 NOV 2009 to 17 DEC 2009

SE-1, 19 NOV 2009 to 17 DEC 2009