

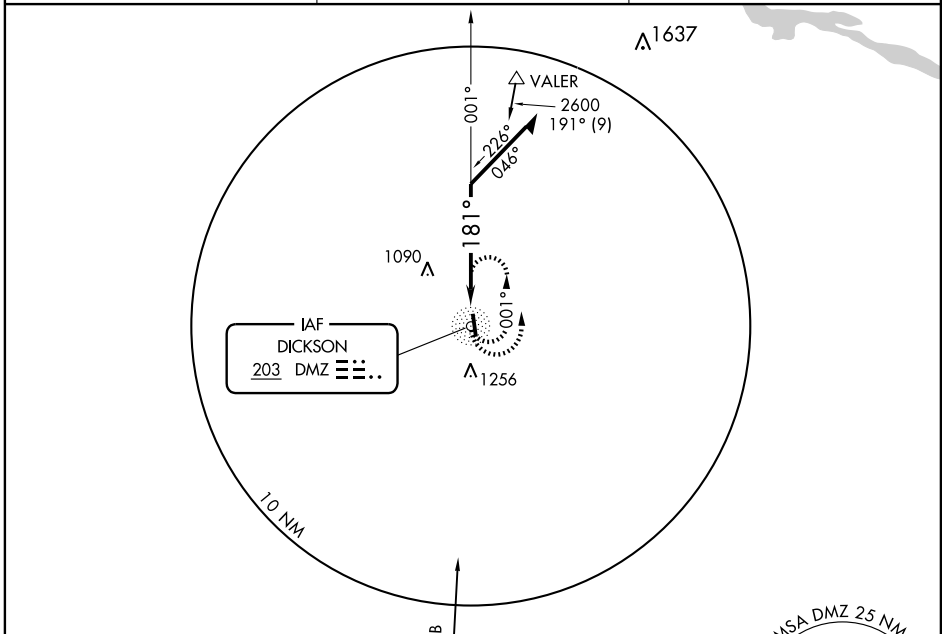
# NDB RWY 17

DICKSON MUNI (M02)

NDB DMZ	APP CRS	Rwy Idg	<b>5001</b>
<b>203</b>	<b>181°</b>	TDZE	<b>892</b>
		Apt Elev	<b>892</b>

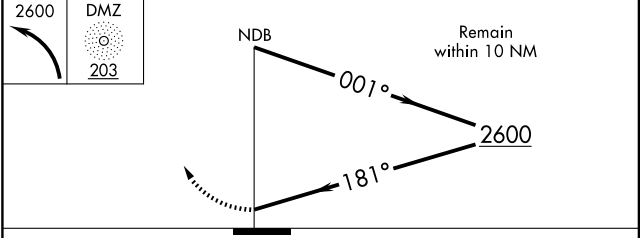
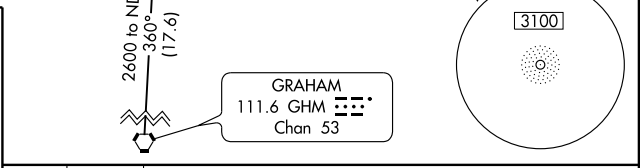
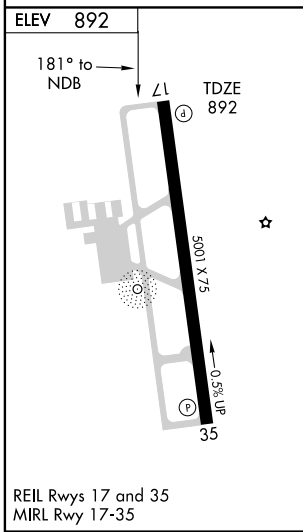
▼ MISSED APPROACH: Climbing left turn to 2600 in Dickson (DMZ) NDB holding pattern.

AWOS-3 <b>123.875</b>	MEMPHIS CENTER <b>125.85 381.4</b>	UNICOM <b>122.8</b> (CTAF)
--------------------------	---------------------------------------	-------------------------------



SE-1, 19 NOV 2009 to 17 DEC 2009

SE-1, 19 NOV 2009 to 17 DEC 2009



CATEGORY	A	B	C	D
S-17	1520-1	628 (700-1)	1520-1 <sup>3</sup> / <sub>4</sub> 628 (700-1 <sup>3</sup> / <sub>4</sub> )	1520-2 628 (700-2)
CIRCLING	1520-1	628 (700-1)	1560-1 <sup>3</sup> / <sub>4</sub> 668 (700-1 <sup>3</sup> / <sub>4</sub> )	1560-2 668 (700-2)