

# RNAV (GPS) RWY 17

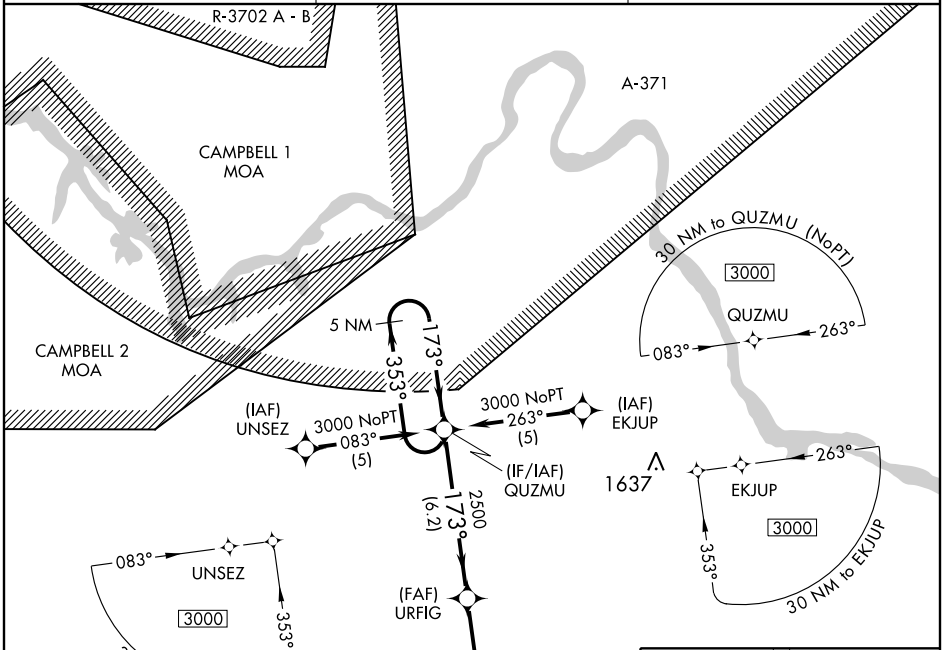
DICKSON MUNI (M02)

APP CRS	Rwy Idg	<b>5001</b>
<b>173°</b>	TDZE	<b>892</b>
	Apt Elev	<b>892</b>

**NA** If local altimeter setting not received, use Nashville Intl altimeter setting and increase all MDAs 140 feet. DME/DME RNP-0.3 NA. VDP NA when using Nashville Intl altimeter setting.

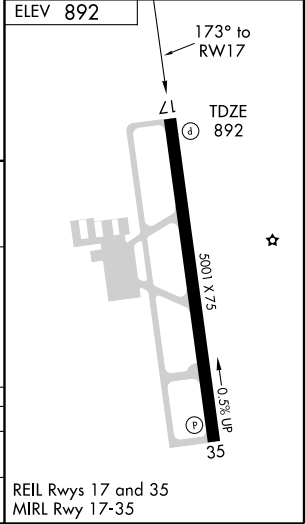
**MISSED APPROACH:** Climbing right turn to 3000 direct QUZMU and hold.

AWOS-3 <b>123.875</b>	MEMPHIS CENTER <b>125.85 381.4</b>	UNICOM <b>122.8 (CTAF)</b>
--------------------------	---------------------------------------	-------------------------------



SE-1, 19 NOV 2009 to 17 DEC 2009

SE-1, 19 NOV 2009 to 17 DEC 2009



5 NM Holding Pattern	QUZMU	URFIG	RW17
3000	173°	173°	0.9 NM to RW17
353°	2500	3.04°	TCH 40
6.2 NM	4 NM	0.9 NM	

CATEGORY	A	B	C	D
RNAV MDA	1300-1	408 (500-1)	1300-1¼	408 (500-1¼)
CIRCLING	1400-1 508 (600-1)	1560-1 668 (700-1)	1560-1¾ 668 (700-1¾)	1560-2 668 (700-2)