

LOC I-DSY 110.1 Chan 38	APP CRS 011°	Rwy Idg TDZE 253 Apt Elev 264	6008
---	------------------------	---	-------------

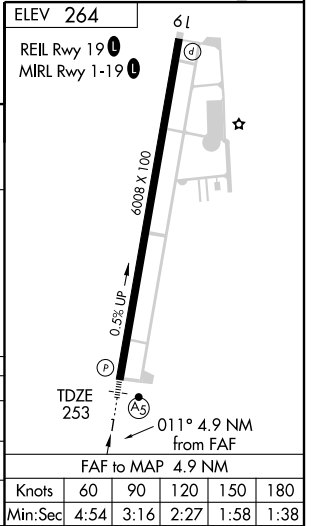
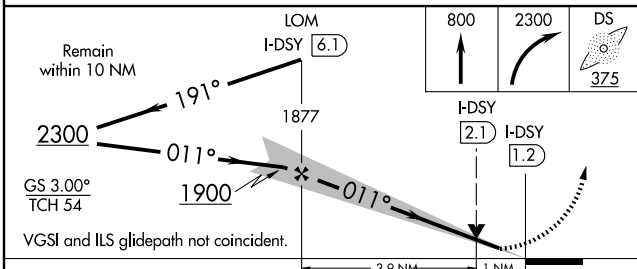
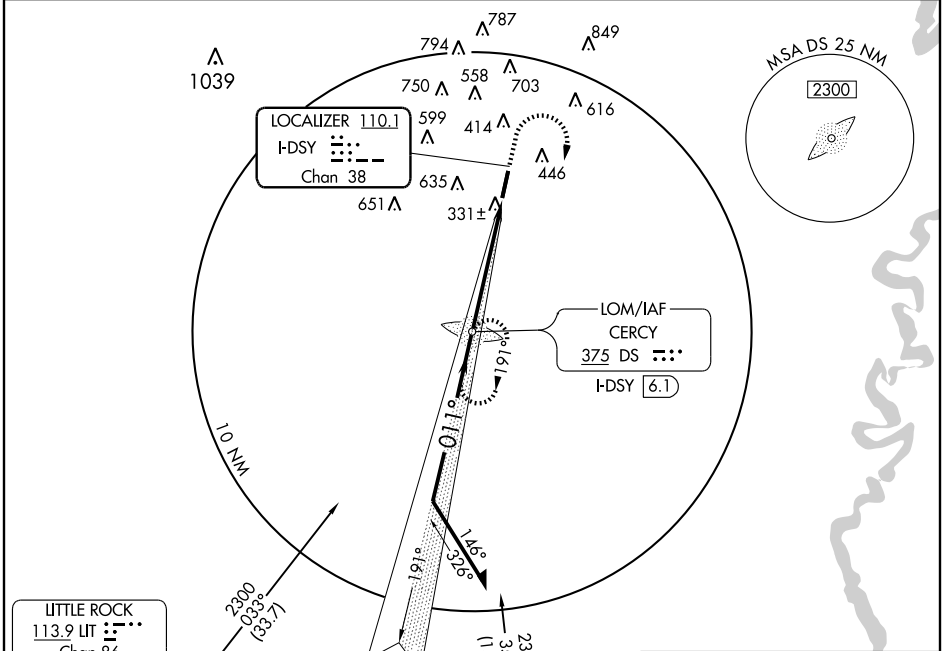
ILS or LOC RWY 1

SEARCY MUNI (S.R.C)

NA Circling NA for Cat C west of runway 1-19. If local altimeter setting not received, use Little Rock/Adams Field altimeter setting and increase all DA/MDAs 100 feet. VDP NA with Little Rock/Adams Field altimeter setting. ADF Required.

MALSR MISSED APPROACH: Climb to 800 then climbing right turn to 2300 direct CERCY LOM and hold.

ASOS 128.325	LITTLE ROCK APP CON 119.75 291.775	CLNC DEL 119.75	UNICOM 122.7 (CTAF)
------------------------	--	---------------------------	-------------------------------



CATEGORY	A	B	C	D
S-ILS 1	453-½	200 (200-½)		NA
S-LOC 1	600-½	347 (400-½)		NA
CIRCLING	760-1	496 (500-1)	760-1½ 496 (500-1½)	NA

SC-1, 11 MAR 2010 to 08 APR 2010

SC-1, 11 MAR 2010 to 08 APR 2010