

RNAV (GPS) RWY 17

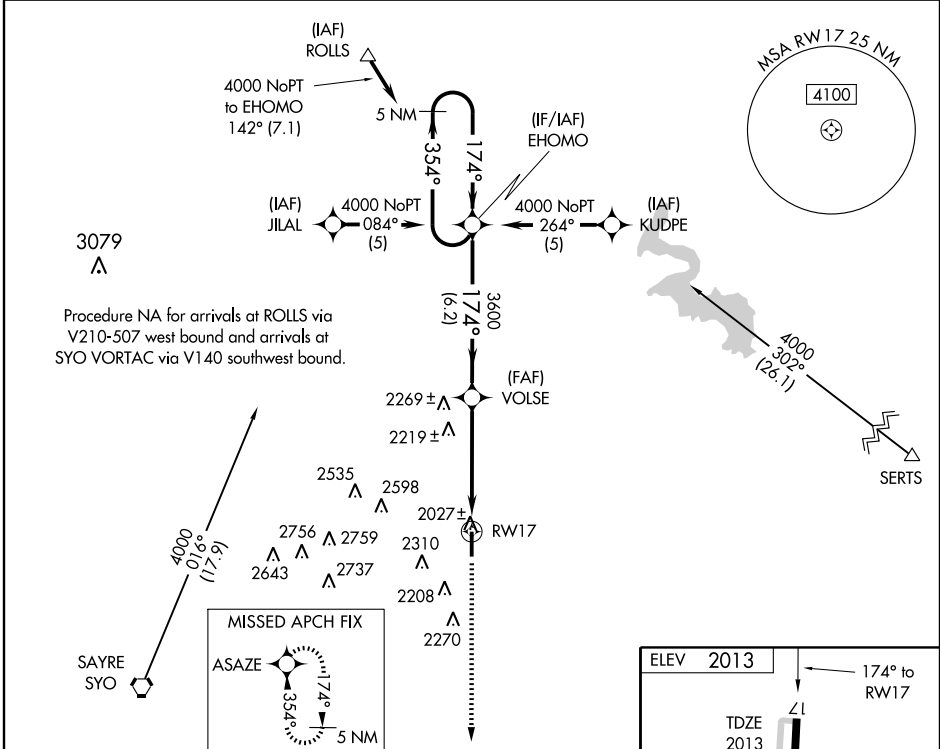
ELK CITY RGNL BUSINESS (ELK)

WAAS CH 82408 W17A	APP CRS 174°	Rwy Idg TDZE Apt Elev	5399 2013 2013
--	------------------------	-----------------------------	---

NA Baro-VNAV NA when using Clinton-Sherman altimeter setting. For uncompensated Baro-VNAV systems, LNAV/VNAV NA below -19°C (-2°F) or above 54°C (130°F). DME/DME RNP-0.3 NA. Visibility reduction by helicopters NA. When local altimeter setting not received, use Clinton-Sherman altimeter setting and increase all DA/MDA 40 feet, increase LNAV Cat C visibility 1/4 mile.

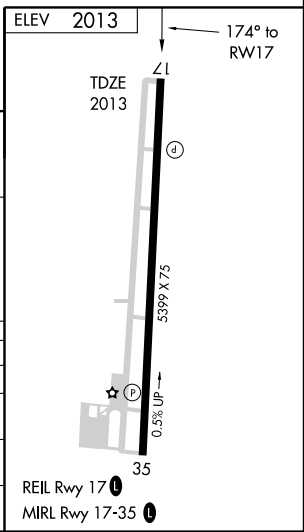
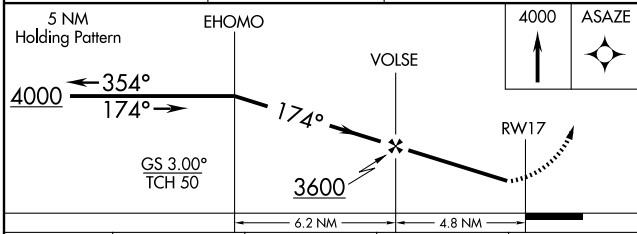
MISSED APPROACH: Climb to 4000 direct ASAZE and hold.

AWOS-3 118.225	FORT WORTH CENTER 128.4 269.375	UNICOM 122.8 (CTAF)
--------------------------	---	-------------------------------



SC-1, 11 MAR 2010 to 08 APR 2010

SC-1, 11 MAR 2010 to 08 APR 2010



CATEGORY	ELEVATION			
	A	B	C	D
LPV DA	2263-1	250 (300-1)		NA
LNAV/VNAV LDA	2361-1 1/4	348 (400-1 1/4)		NA
LNAV MDA	2480-1	467 (500-1)	2480-1 1/4 467 (500-1 1/4)	NA
CIRCLING	2520-1	507 (600-1)	2520-1 1/2 507 (600-1 1/2)	NA