

KNOXVILLE, TENNESSEE

AL-6102 (FAA)

VORTAC VXV <b>116.4</b> Chan <b>111</b>	APP CRS <b>199°</b>	Rwy Idg TDZE Apt Elev	<b>3499</b> <b>N/A</b> <b>833</b>
---	------------------------	-----------------------------	---

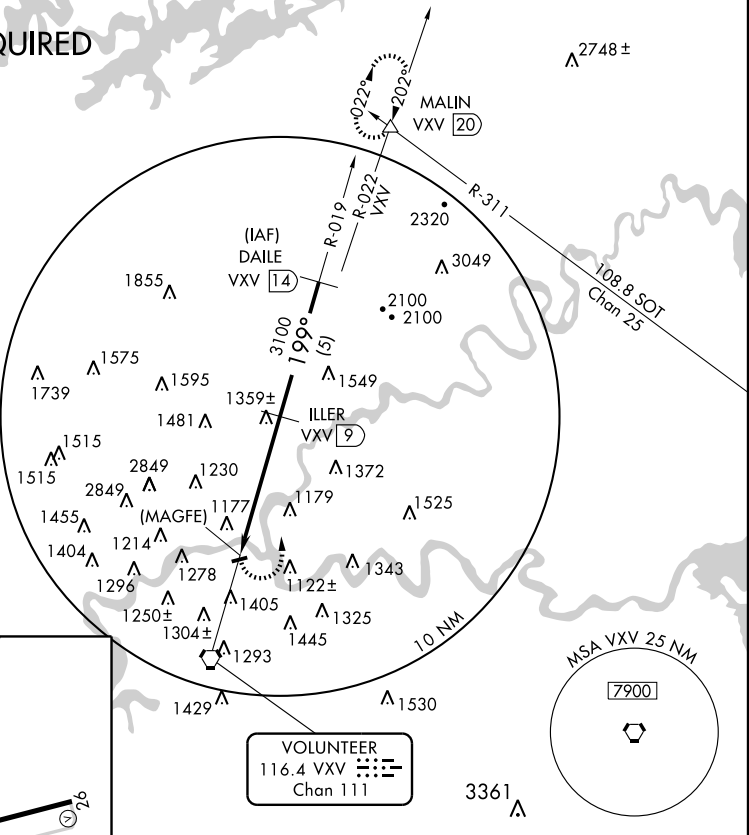
**VOR/DME or GPS-B**  
KNOXVILLE DOWNTOWN ISLAND (DKX)

**▼** If local altimeter setting not received use Knoxville altimeter setting and increase all MDAs 40 feet.  
**▲ NA**

**MISSED APPROACH:** Climbing left turn to 4500 via heading 360° and VXV R-022 to MALIN INT/VXV 20 DME and hold.

AWOS-3 <b>125.375</b>	KNOXVILLE APP CON <b>123.9 353.6</b>	CLNC DEL <b>121.7</b>	UNICOM <b>122.95</b>	CTAF <b>126.6</b>
--------------------------	---	--------------------------	-------------------------	----------------------

**RADAR REQUIRED**

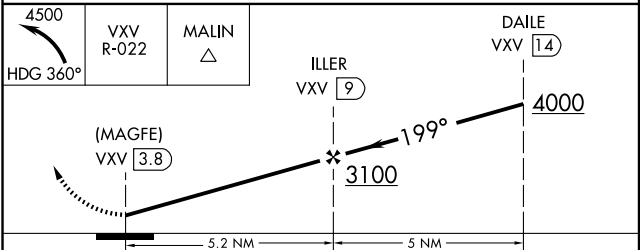
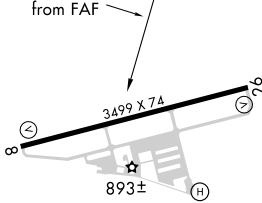


SE-1, 11 MAR 2010 to 08 APR 2010

SE-1, 11 MAR 2010 to 08 APR 2010

ELEV 833

199° 5.2 NM from FAF



REIL Rwy 8 and 26  
MIRL Rwy 8-26

CATEGORY	A	B	C	D
CIRCLING	1620-1 787 (800-1)	1740-1¼ 907 (1000-1¼)	1740-2¾ 907 (1000-2¾)	NA

KNOXVILLE, TENNESSEE  
Amdt 6A 09183

35° 58'N-83° 52'W

KNOXVILLE DOWNTOWN ISLAND (DKX)  
**VOR/DME or GPS-B**