

# RNAV (GPS) RWY 11

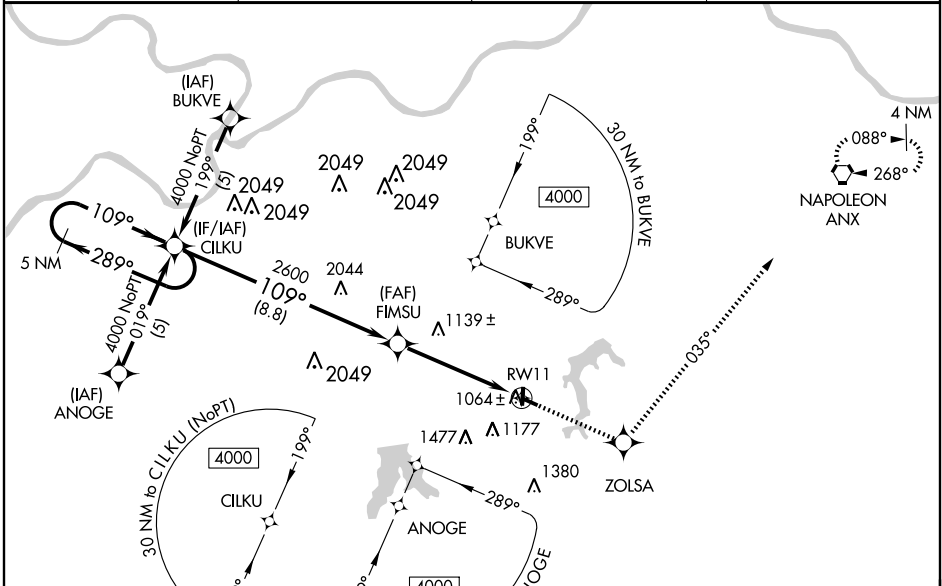
LEE'S SUMMIT MUNI (LXT)

WAAS CH <b>99405</b> <b>W11A</b>	APP CRS <b>109°</b>	Rwy Idg <b>3800</b> TDZE <b>1004</b> Apt Elev <b>1004</b>
--	------------------------	---

Baro-VNAV NA when using Charles B. Wheeler Downtown altimeter setting. For uncompensated Baro-VNAV systems, LNAV/VNAV NA below -17°C (2°F) or above 54°C (130°F).  
 ⚠ DME/DME RNP -0.3 NA. Visibility reduction by helicopters NA.  
 If local altimeter setting not received, use Charles B. Wheeler Downtown altimeter setting and increase all DAs 68 feet, and all MDAs 80 feet.

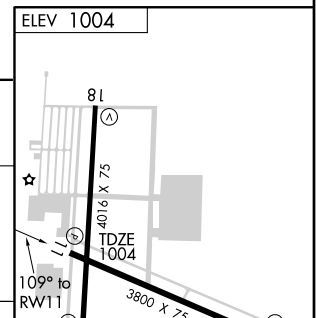
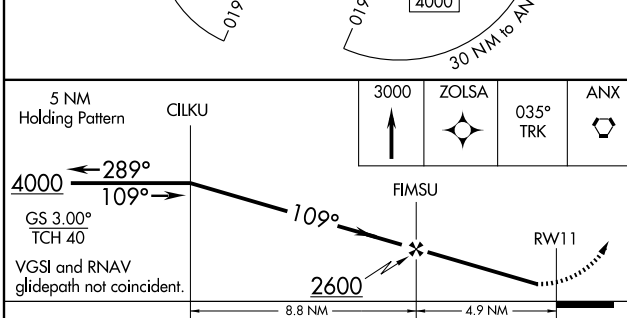
MISSED APPROACH: Climb to 3000 direct ZOLSA and via 035° track ANX VORTAC and hold.

ASOS <b>124.175</b>	KANSAS CITY APP CON <b>118.4 294.7</b>	CLNC DEL <b>118.45</b>	UNICOM <b>122.8 (CTAF) 0</b>
------------------------	---	---------------------------	---------------------------------



NC-3, 11 MAR 2010 to 08 APR 2010

NC-3, 11 MAR 2010 to 08 APR 2010



CATEGORY	A	B	C	D
LPV DA	1254-1	250 (300-1)		NA
LNAV/VNAV DA	1334-1¼	330 (400-1¼)		NA
LNAV MDA	1400-1	396 (400-1)		NA
CIRCLING	1440-1 436 (500-1)	1540-1 536 (600-1)	1540-1½ 536 (600-1½)	NA

REIL Rwy 11, 18, 29 and 36 0  
 MRL Rwy 11-29 and 18-36 0