

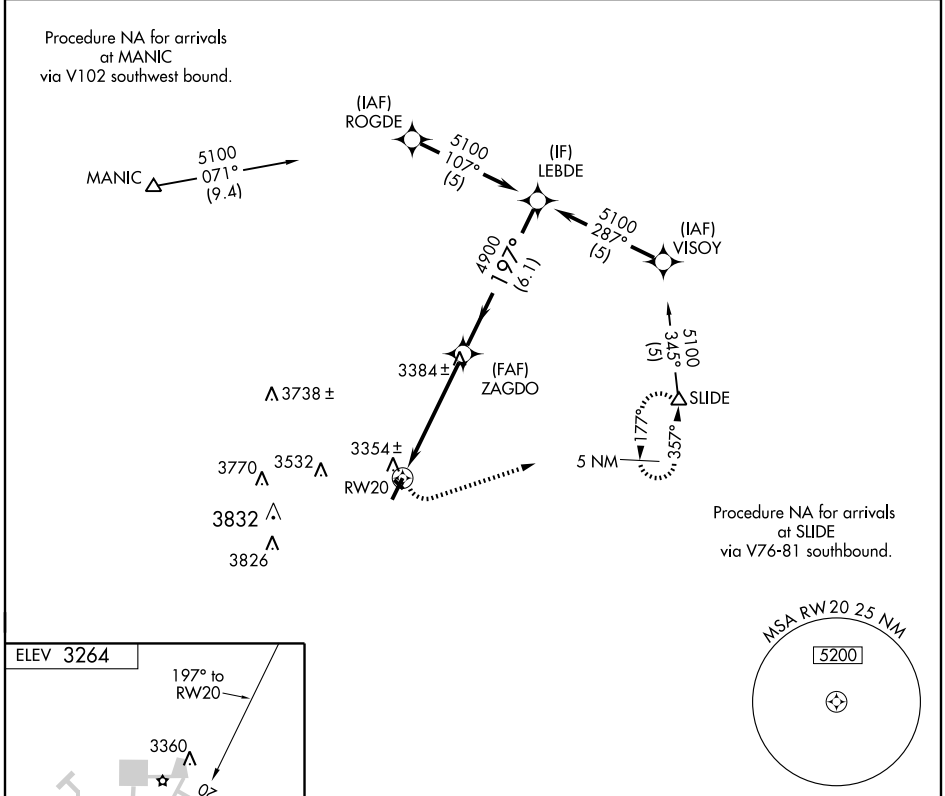
APP CRS	Rwy Idg	5217
197°	TDZE	3264
	Apt Elev	3264

RNAV (GPS) RWY 20
BROWNFIELD/TERRY COUNTY (B.F.E.)

⚠ DME/DME RNP-0.3 NA. Visibility reduction by helicopters NA. Use Seminole altimeter setting, when not received, use Lubbock altimeter setting.

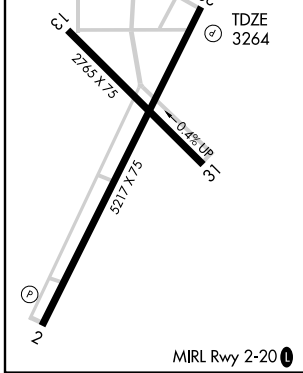
⚠ NA MISSED APPROACH: Climbing left turn to 5200 direct SLIDE and hold.

SEMINOLE AWOS-3 118.075	LUBBOCK APP CON 119.9 335.6	UNICOM 122.8 (CTAF) 0
-----------------------------------	---------------------------------------	---------------------------------



SC-2, 11 MAR 2010 to 08 APR 2010

SC-2, 11 MAR 2010 to 08 APR 2010



5200	SLIDE			
	Δ			
RW20		ZAGDO	LEBDE	5100
		4900	197°	Procedure Turn NA
		$\leq 3.04^\circ$ TCH 41		
		4.9 NM	6.1 NM	
CATEGORY	A	B	C	D
LNAV MDA	3700-1	436 (500-1)	3700-1¼ 436 (500-1¼)	3700-1½ 436 (500-1½)
CIRCLING	3760-1	496 (500-1)	3780-1½ 516 (600-1½)	3920-2 656 (700-2)

