

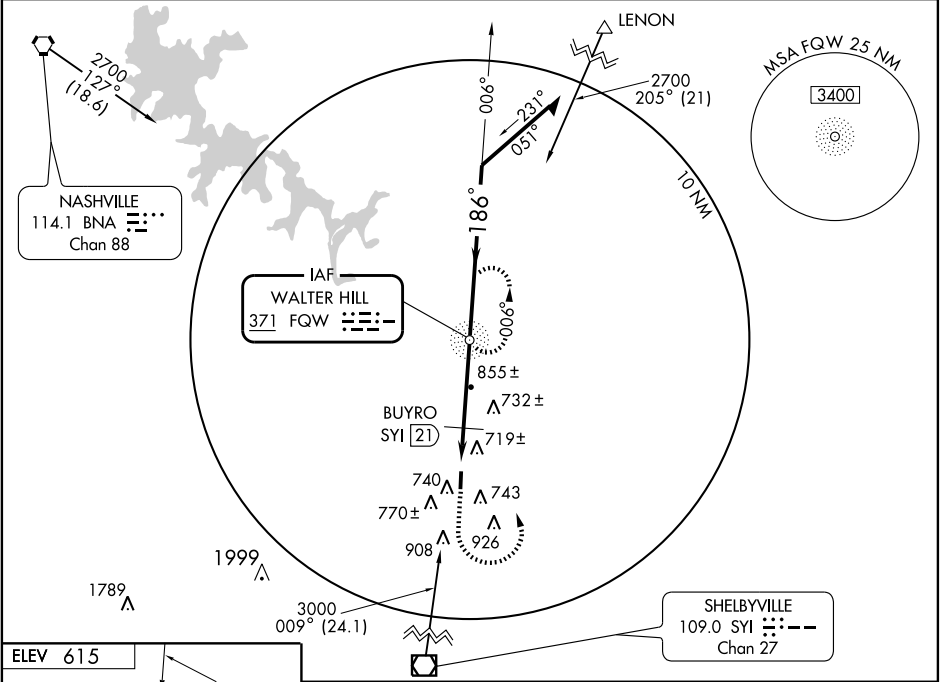
NDB RWY 18

MURFREESBORO MUNI (MBT)

NDB FQW 371	APP CRS 186°	Rwy ldg TDZE Apt Elev	3898 613 615
-----------------------	------------------------	-----------------------------	---

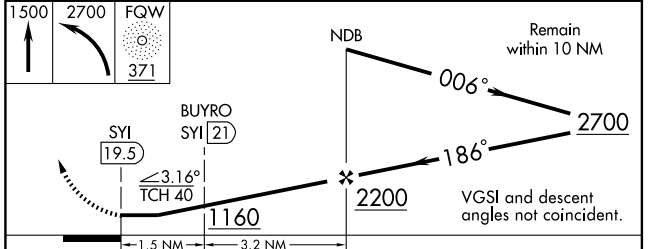
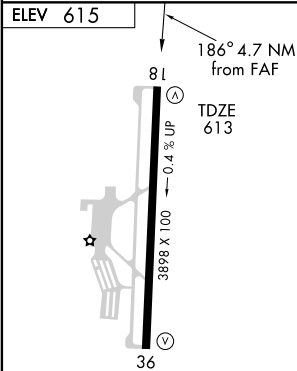
MISSED APPROACH: Climb to 1500 then climbing left turn to 2700 direct FQW NDB and hold.

AWOS-3 133.975	NASHVILLE APP CON 118.4 360.7	GCO 135.075	UNICOM 122.7 (CTAF)
--------------------------	---	-----------------------	-------------------------------



SE-1, 11 MAR 2010 to 08 APR 2010

SE-1, 11 MAR 2010 to 08 APR 2010



MIRL Rwy 18-36
 REIL Rwys 18 and 36

FAF to MAP 4.7 NM					
Knots	60	90	120	150	180
Min:Sec	4:42	3:08	2:21	1:53	1:34

CATEGORY	A	B	C	D
S-18	1160-1 547 (600-1)		1160-1½ 547 (600-1½)	NA
CIRCLING	1160-1 545 (600-1)		1160-1½ 545 (600-1½)	NA
BUYRO DME MINIMUMS				
S-18	1020-1 407 (500-1)		1020-1¼ 407 (500-1¼)	NA
CIRCLING	1080-1 465 (500-1)		1080-1½ 465 (500-1½)	NA