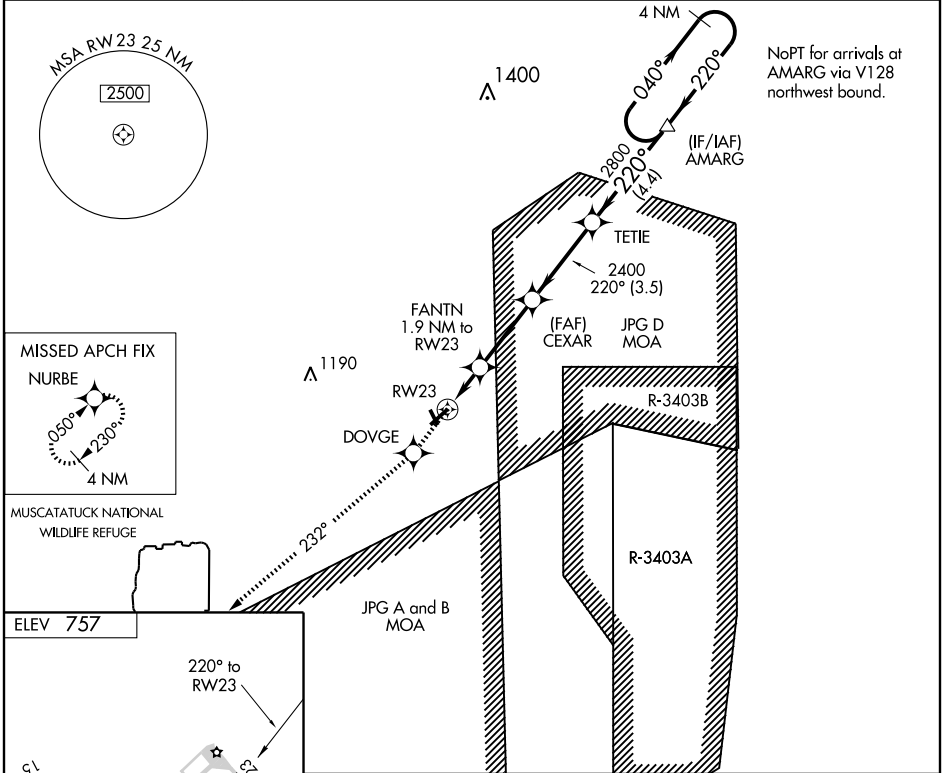


RNAV (GPS) Y RWY 23

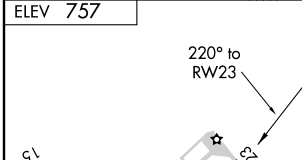
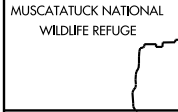
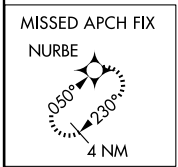
NORTH VERNON (OVO)

APP CRS 220°	Rwy Idg 5002
	TDZE 755
	Apt Elev 757

<p>▼ DME/DME RNP-0.3 NA. When local altimeter setting not received, use Shelbyville altimeter setting and increase all MDA 100 feet, increase LNAV Cat C visibility ¼ mile. ▲ NA VDP NA when using Shelbyville altimeter setting.</p>	<p>MISSED APPROACH: Climb to 2700 direct DOVGE and via track 232° to NURBE and hold.</p>	
<p>AWOS-3 120.625</p>	<p>INDIANAPOLIS CENTER 124.775 269.45</p>	<p>UNICOM 122.7 (CTAF) 0</p>



NoPT for arrivals at AMARG via V128 northwest bound.



2700	DOVGE	TRK 232°	NURBE	CEXAR	TETIE	AMARG	4 NM Holding Pattern
					2800	2800	2800
			FANTN 1.9 NM to RWY 23		2400		2800
			RWY 23		1400		2800
			1.1 NM to RWY 23		3.04°		2800
			0.8 NM		TCH 40		2800
			1.1 NM		3.1 NM	3.5 NM	4.4 NM
CATEGORY	A		B		C		D
LNAV MDA	1120-1		365 (400-1)				NA
CIRCLING	1180-1 423 (500-1)	1220-1 463 (500-1)	1220-1½ 463 (500-1½)			NA	

MIRL Rwy 5-23 0

EC-2, 11 MAR 2010 to 08 APR 2010

EC-2, 11 MAR 2010 to 08 APR 2010