

RNAV (GPS) RWY 21

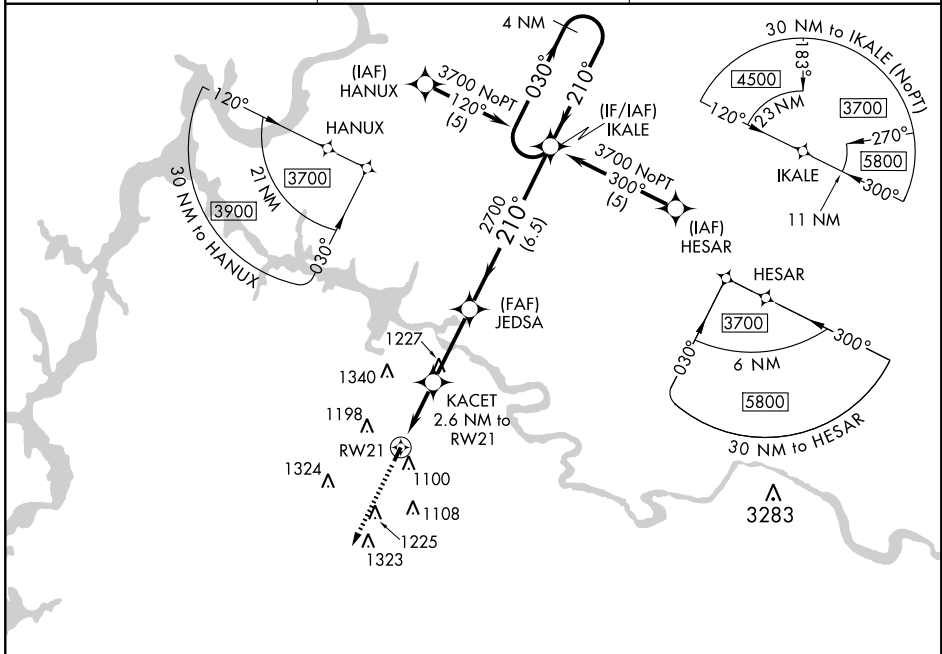
CLEVELAND/HARDWICK FIELD (HDI)

APP CRS	Rwy Idg	3300
210°	TDZE	874
	Apt Elev	874

Procedure NA at night. DME/DME RNP-0.3 NA.
 Use Athens altimeter setting; if not received, use Chattanooga altimeter setting and increase all MDAs 40 feet.

MISSED APPROACH: Climb to 3700 direct EBOCI and hold.

MCMINN COUNTY AWOS-3 125.425	CHATTANOOGA APP CON* 125.1 379.1	UNICOM 122.8 (CTAF)
--	--	-------------------------------



SE-1, 19 NOV 2009 to 17 DEC 2009

SE-1, 19 NOV 2009 to 17 DEC 2009

