

RNAV (GPS) RWY 23

CHILLICOTHE / ROSS COUNTY (RZT)

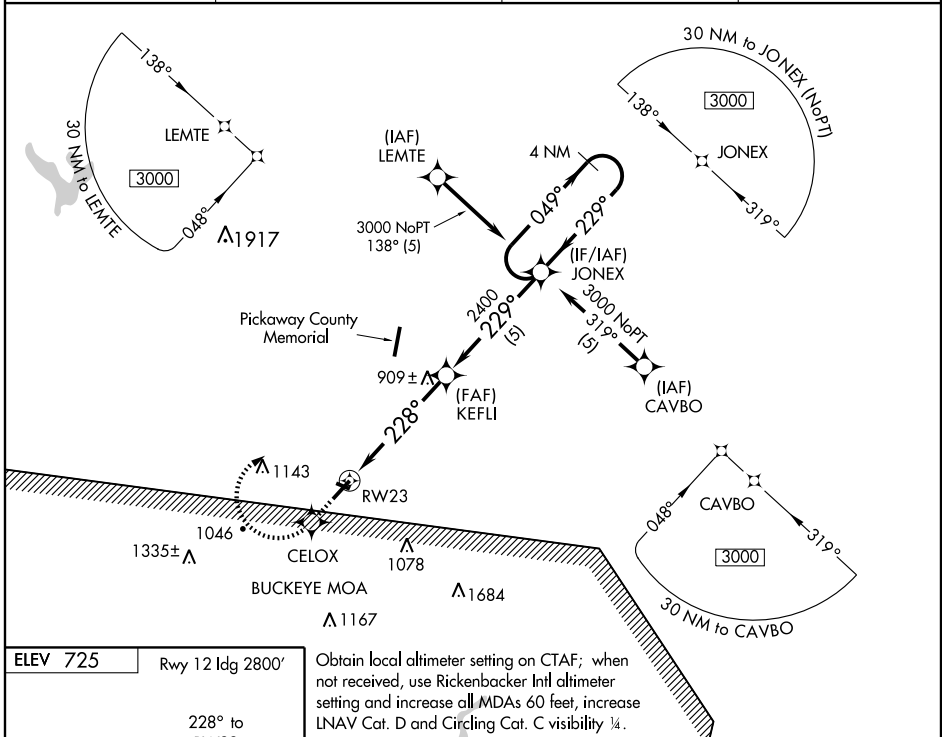
APP CRS 228°	Rwy Idg TDZE Apt Elev	5400 716 725
------------------------	-----------------------------	---

Baro-VNAV and VDP NA with Rickenbacker Intl altimeter setting. Baro-VNAV NA below -16°C (3°F)

GPS or RNP-0.3 required. DME/DME RNP-0.3 NA.

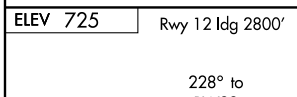
MISSED APPROACH: Climb to 3000 via 229° course to CELOX WP, then right turn via 048° course to JONEX WP and hold.

AWOS-3 119.225	COLUMBUS APP CON 132.3 317.775	UNICOM 122.8 (CTAF)	123.0
--------------------------	--	-------------------------------	--------------

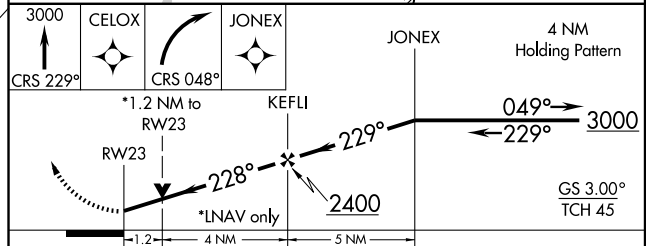


EC-2, 11 MAR 2010 to 08 APR 2010

EC-2, 11 MAR 2010 to 08 APR 2010



Obtain local altimeter setting on CTAF; when not received, use Rickenbacker Intl altimeter setting and increase all MDAs 60 feet, increase LNAV Cat. D and Circling Cat. C visibility ¼.



CATEGORY	A	B	C	D
GLS PA DA	NA			
LNAV/VNAV DA	1040-1 ¼		324 (400-1 ¼)	
LNAV MDA	1120-1	404 (500-1)	1120-1 ¼	404 (500-1 ¼)
CIRCLING	1320-1 ¼ 595 (600-1 ¼)	1340-1 ¼ 615 (700-1 ¼)	1380-1 ¼ 655 (700-1 ¼)	1400-2 ¼ 675 (700-2 ¼)