

NORWICH, NEW YORK

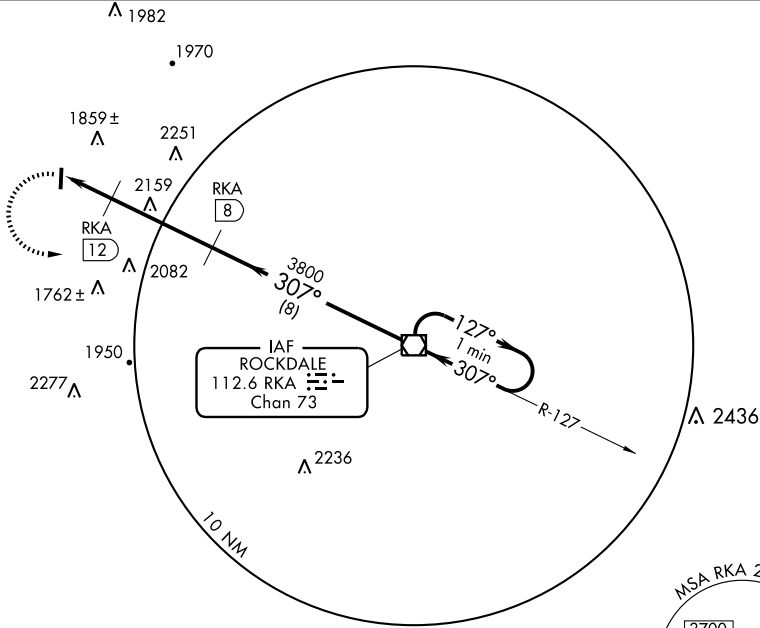
AL-6148 (FAA)

VOR/DME RKA 112.6 Chan 73	APP CRS 307°	Rwy Idg TDZE Apt Elev N/A N/A 1025
---	------------------------	--

VOR/DME-A
NORWICH / LT. WARREN EATON (OIC)

<p>▼ If local altimeter setting not received, use Greater Binghamton altimeter setting and increase all MDAs 160 feet.</p> <p>▲ NA</p>	<p>MISSED APPROACH: Climbing left turn to 3800, direct RKA VOR/DME and hold.</p>
--	---

AWOS-3 119.025	BOSTON CENTER 133.25 279.5	UNICOM 122.8 (CTAF) 0
--------------------------	--------------------------------------	---------------------------------



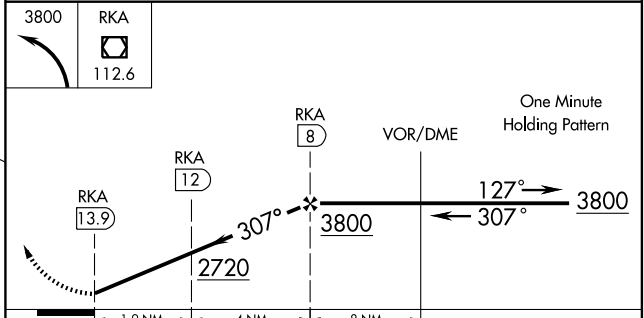
NE-2, 19 NOV 2009 to 17 DEC 2009

NE-2, 19 NOV 2009 to 17 DEC 2009

ELEV 1025 **D**

HIRL Rwy 1-19 **0**
REIL Rwys 1 and 19 **0**

NoPT for arrivals on RKA VOR/DME
airway radials 086 CW 155.



CATEGORY	A	B	C	D
CIRCLING	2140-1¼ 1115 (1200-1¼)	2160-1½ 1135 (1200-1½)	2160-3 1135 (1200-3)	2220-3 1195 (1200-3)

NORWICH, NEW YORK
Amdt 4 08325

42°34'N - 75°31'W

NORWICH / LT. WARREN EATON (OIC)
VOR/DME-A