

MIDLAND, TEXAS

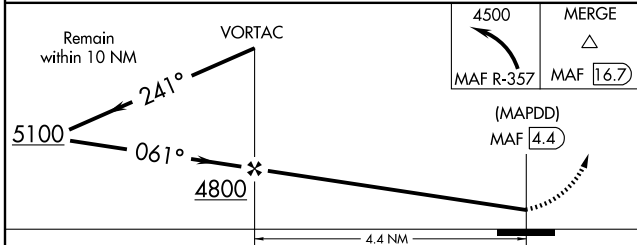
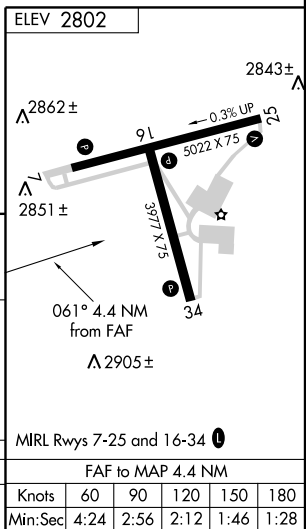
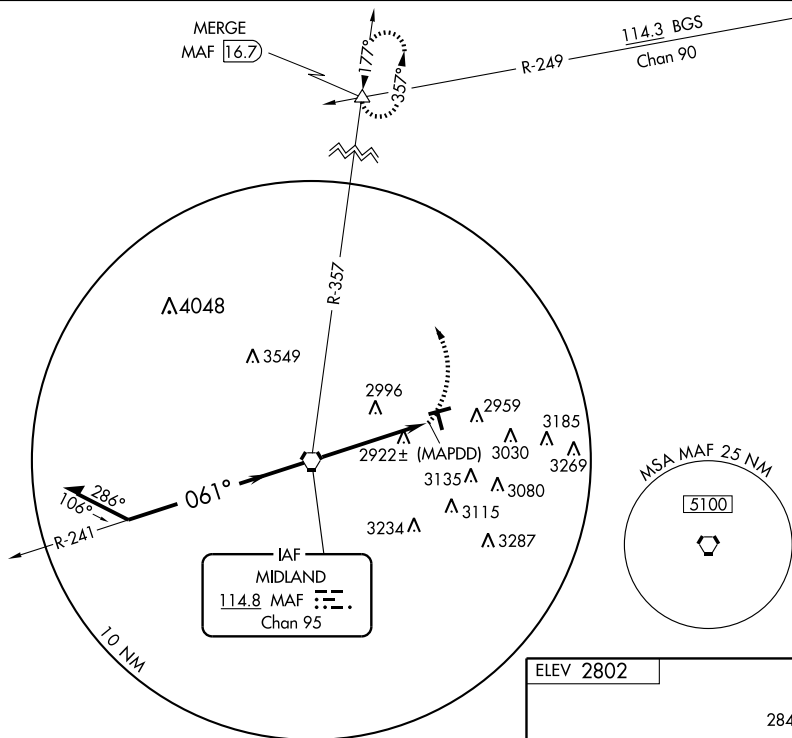
AL-6158 (FAA)

VORTAC MAF <b>114.8</b> Chan <b>95</b>	APP CRS <b>061°</b>	Rwy Idg TDZE Apt Elev <b>2802</b>	<b>N/A</b> <b>N/A</b>
--	------------------------	--	--------------------------

# VOR or GPS-A

MIDLAND AIRPARK (MIDD)

<p><b>▼</b> Use Midland Intl altimeter setting.</p> <p><b>▲ NA</b></p>		<p>MISSED APPROACH: Climbing left turn to 4500 via MAF R-357 to MERGE Int and hold.</p>	
AWOS-3 <b>118.125</b>	MIDLAND APP CON ★ <b>124.6 290.4</b>	CLNC DEL <b>121.8</b>	UNICOM <b>122.7 (CTAF) 0</b>



CATEGORY	A		B		C		D		FAF to MAP 4.4 NM				
	3380-1	578 (600-1)	3380-1½	578 (600-1½)	3700-3	898 (900-3)	Knots	60	90	120	150	180	
CIRCLING							Min:Sec	4:24	2:56	2:12	1:46	1:28	

MIDLAND, TEXAS  
Amdt 2 08101

32°02'N-102°06'W

# MIDLAND AIRPARK (MIDD)

## VOR or GPS-A

SC-3, 11 MAR 2010 to 08 APR 2010

SC-3, 11 MAR 2010 to 08 APR 2010