

NDB RWY 11

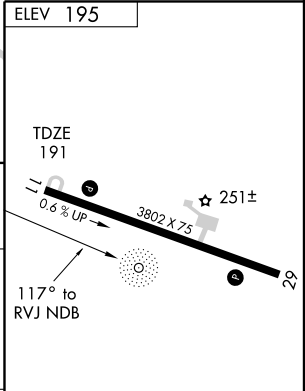
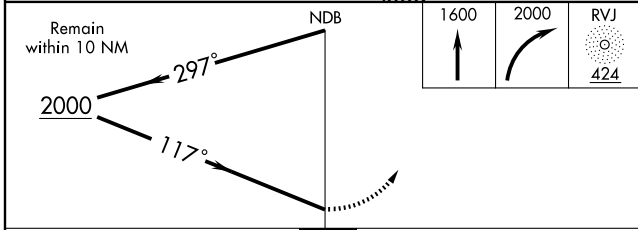
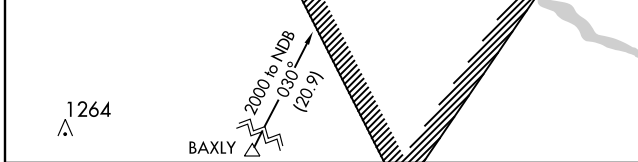
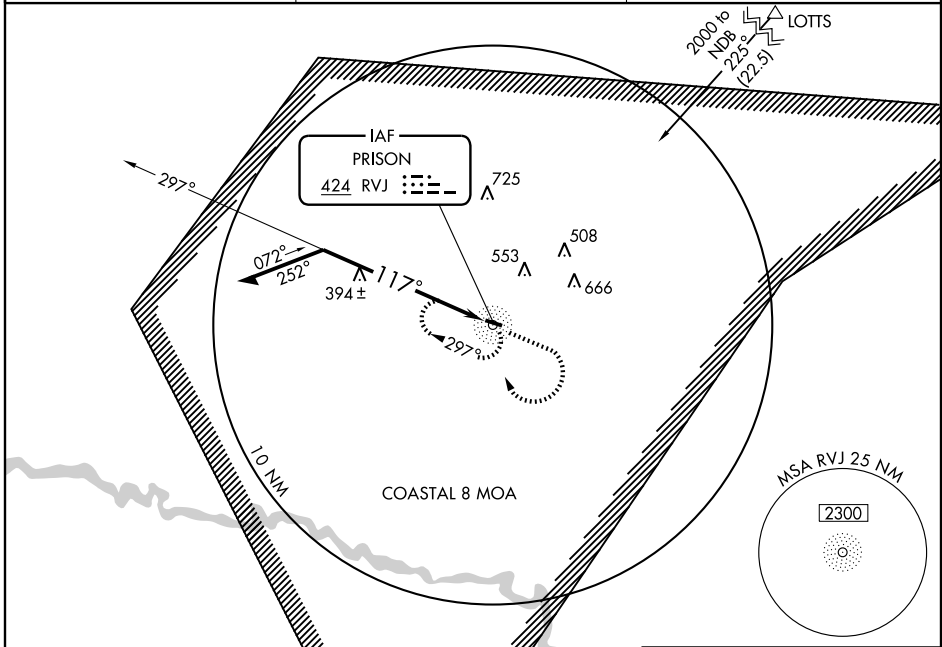
REIDSVILLE/ SWINTON SMITH FIELD AT REIDSVILLE MUNI (R.VJ)

NDB RVJ 424	APP CRS 117°	Rwy Idg 3802
		TDZE 191
		Apt Elev 195

▼ Use Vidalia altimeter setting; when not received, use Alma altimeter setting and increase all MDAs 40 feet. Visibility reduction by helicopters NA.

MISSED APPROACH: Climb to 1600 then climbing right turn to 2000 direct RVJ NDB and hold.

VIDALIA AWOS-3 119.925	JACKSONVILLE CENTER 132.3 290.4	CTAF 122.9 0
----------------------------------	---	------------------------



CATEGORY	A	B	C	D
S-11	800-1 609 (700-1)		800-1¾ 609 (700-1¾)	NA
CIRCLING	800-1 605 (700-1)		800-1¾ 605 (700-1¾)	NA

ELEV 195		MIRL Rwy 11-29 0	
TDZE 191	RVJ 424	251±	29
0.6% UP		117° to RVJ NDB	
Knots	60	90	120
Min:Sec			

SE-4, 11 MAR 2010 to 08 APR 2010

SE-4, 11 MAR 2010 to 08 APR 2010

NDB RWY 11