

BOONVILLE, MISSOURI

AL-6192 (FAA)

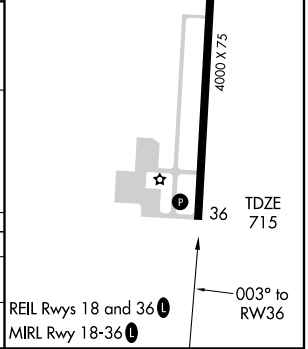
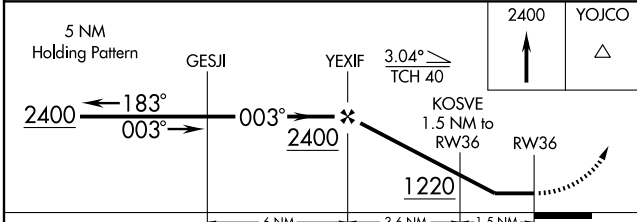
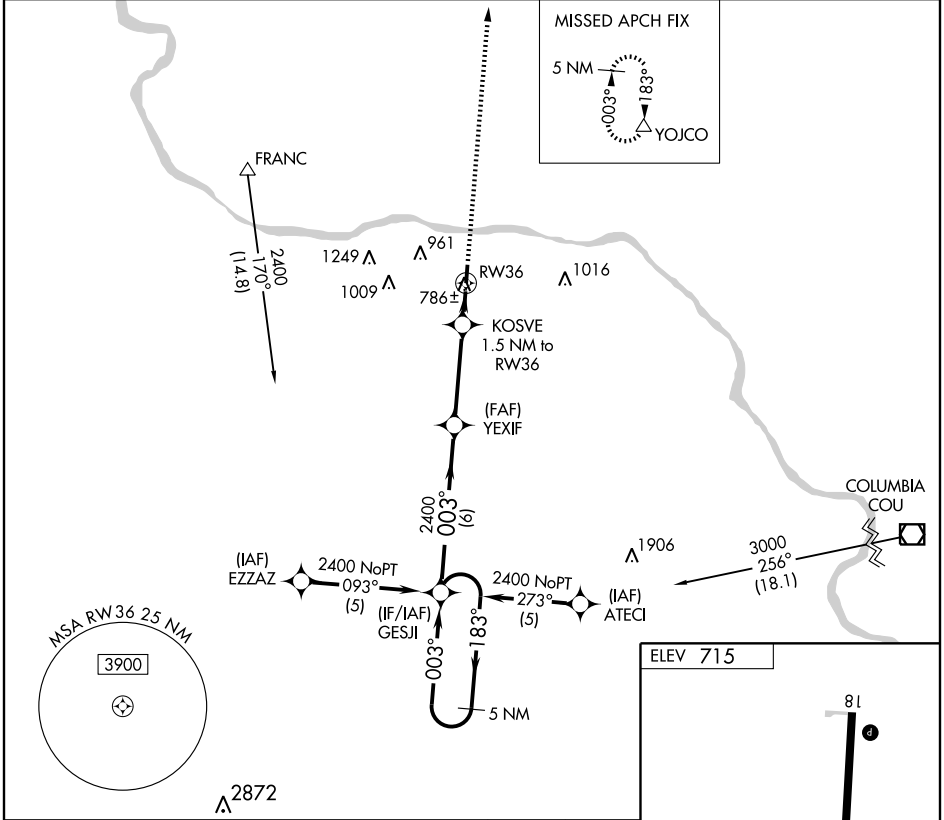
RNAV (GPS) RWY 36

BOONVILLE/JESSE VIERTEL MEMORIAL (V.T.R.)

APP CRS	Rwy Idg	4000
003°	TDZE	715
	Apt Elev	715

 DME/DME RNP-0.3 NA. Visibility reduction by helicopters NA. Use Columbia Rgnl altimeter setting.	MISSED APPROACH: Climb to 2400 direct YOJCO and hold.
--	---

MIZZU APP CON 124.375	UNICOM 122.7 (CTAF)
---------------------------------	-------------------------------



CATEGORY	A	B	C	D
RNAV MDA	1120-1	405 (500-1)	1120-1¼ 405 (500-1¼)	NA
CIRCLING	1200-1	485 (500-1)	1340-1¾ 625 (700-1¾)	NA

REIL Rwy 18 and 36

MIRL Rwy 18-36

003° to RW36

NC-3, 11 MAR 2010 to 08 APR 2010

NC-3, 11 MAR 2010 to 08 APR 2010

BOONVILLE, MISSOURI
Orig 09351

38°57'N-92°41'W

BOONVILLE/JESSE VIERTEL MEMORIAL (V.T.R.)
RNAV (GPS) RWY 36