

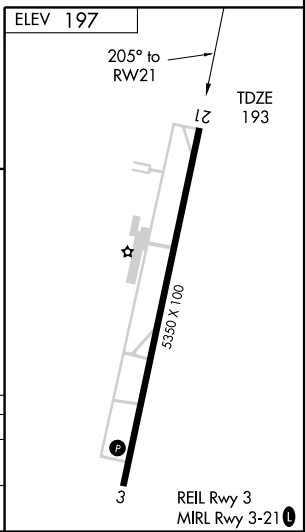
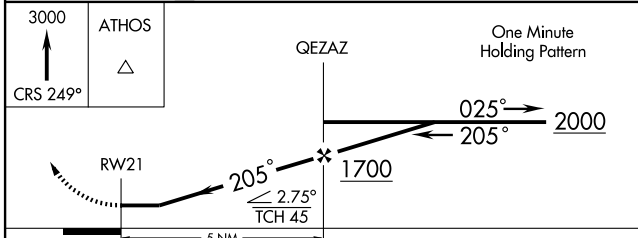
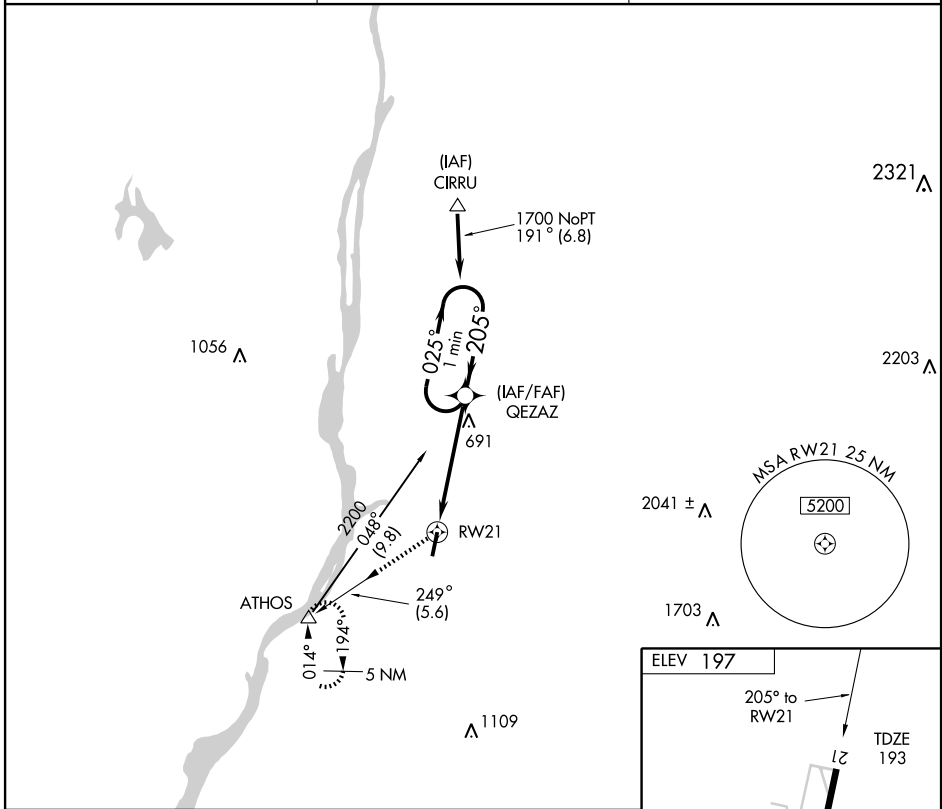
# GPS RWY 21

HUDSON/COLUMBIA COUNTY (1B1)

APP CRS <b>205°</b>	Rwy Idg <b>5350</b>
	TDZE <b>193</b>
	Apt Elev <b>197</b>

**NA** If local altimeter setting not received, use Albany altimeter setting and increase all MDAs 60 feet. MISSED APPROACH: Climb to 3000 via 249° course to ATHOS and hold.

AWOS-3 <b>133.525</b>	ALBANY APP CON <b>132.825 307.2</b>	UNICOM <b>123.05 (CTAF)</b>
--------------------------	--	--------------------------------



CATEGORY	A	B	C	D
S-21	1020-1 827 (900-1)	1020-1¼ 827 (900-1¼)	1020-2½ 827 (900-2½)	1020-2¾ 827 (900-2¾)
CIRCLING	1020-1 823 (900-1)	1020-1¼ 823 (900-1¼)	1020-2½ 823 (900-2½)	1020-2¾ 823 (900-2¾)

# GPS RWY 21

NE-2, 19 NOV 2009 to 17 DEC 2009

NE-2, 19 NOV 2009 to 17 DEC 2009