

# GPS RWY 3

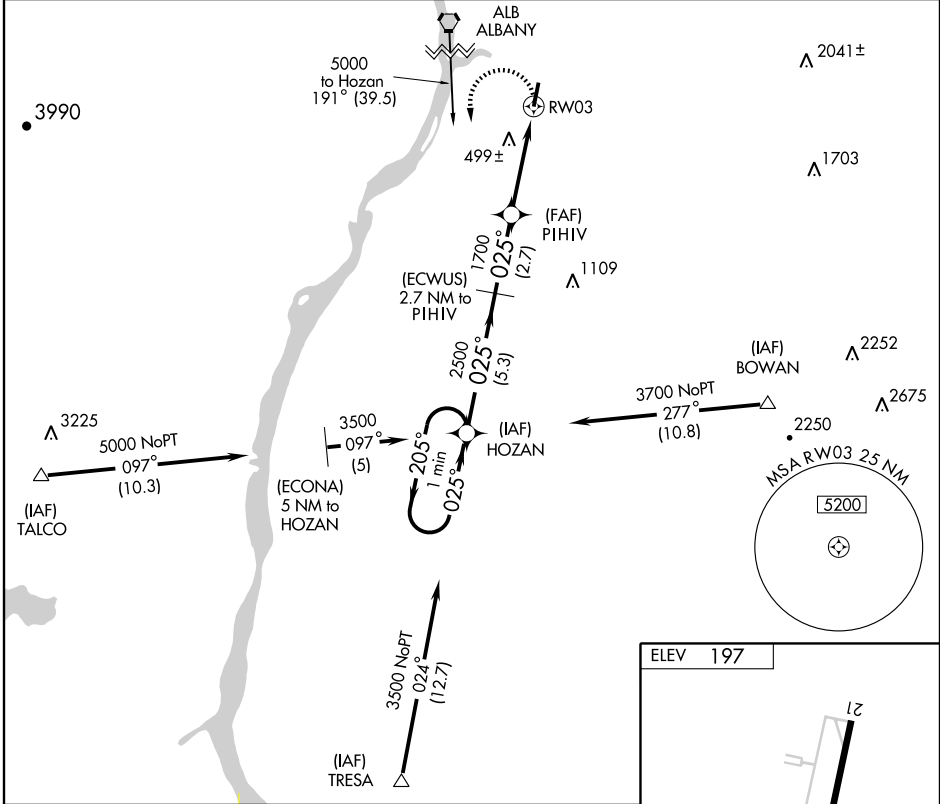
HUDSON/COLUMBIA COUNTY (1B1)

APP CRS	Rwy Idg	<b>5350</b>
<b>025°</b>	TDZE	<b>197</b>
	Apt Elev	<b>197</b>

**NA** If local altimeter setting not received, use Albany altimeter setting and increase all MDAs 80 feet.

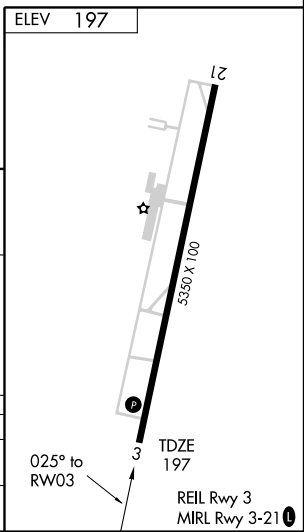
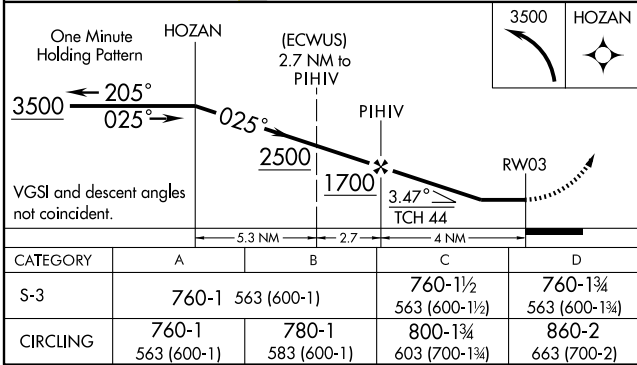
**MISSED APPROACH:** Climbing left turn to 3500 direct HOZAN WP and hold.

<b>AWOS-3</b> <b>133.525</b>	<b>ALBANY APP CON</b> <b>132.825 307.2</b>	<b>UNICOM</b> <b>123.05 (CTAF)</b>
---------------------------------	---	---------------------------------------



NE-2, 19 NOV 2009 to 17 DEC 2009

NE-2, 19 NOV 2009 to 17 DEC 2009



# GPS RWY 3