

RNAV (GPS) RWY 23

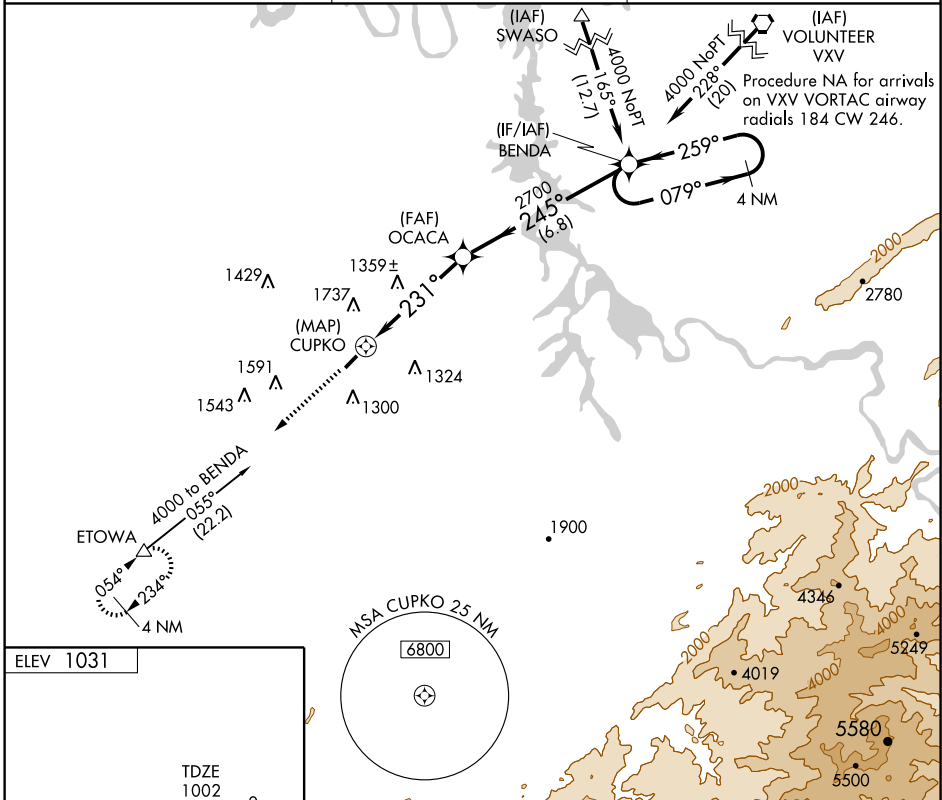
MADISONVILLE/ MONROE COUNTY (MNV)

APP CRS 231°	Rwy Idg 3501
	TDZE 1002
	Apt Elev 1031

NA Circling NA NW of Rwy 5-23. DME/DME RNP-0.3 NA. Procedure NA at night. Visibility reduction by helicopters NA. When local altimeter setting not received, use McGhee-Tyson altimeter setting and increase all MDA 80 feet and increase LNAV and Circling Cat. C visibilities ½ mile.

MISSED APPROACH: Climb to 3000 direct ETOWA and hold.

AWOS-3 118.475	KNOXVILLE APP CON 123.9 353.6	UNICOM 123.0 (CTAF)
--------------------------	---	-------------------------------



SE-1, 19 NOV 2009 to 17 DEC 2009

SE-1, 19 NOV 2009 to 17 DEC 2009

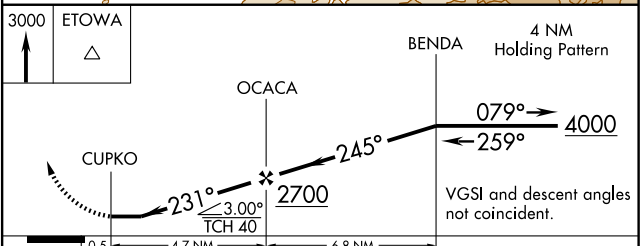
ELEV 1031

TDZE 1002

3641 x 75

0.9% UP

MIRL Rwy 5-23
REIL Rws 5 and 23



CATEGORY	A	B	C	D
LNAV MDA	1620-1	618 (600-1)	1620-1¾ 618 (600-1¾)	NA
CIRCLING	1620-1	589 (600-1)	1620-1¾ 589 (600-1¾)	NA