

LANCASTER, OHIO

AL-6212 (FAA)

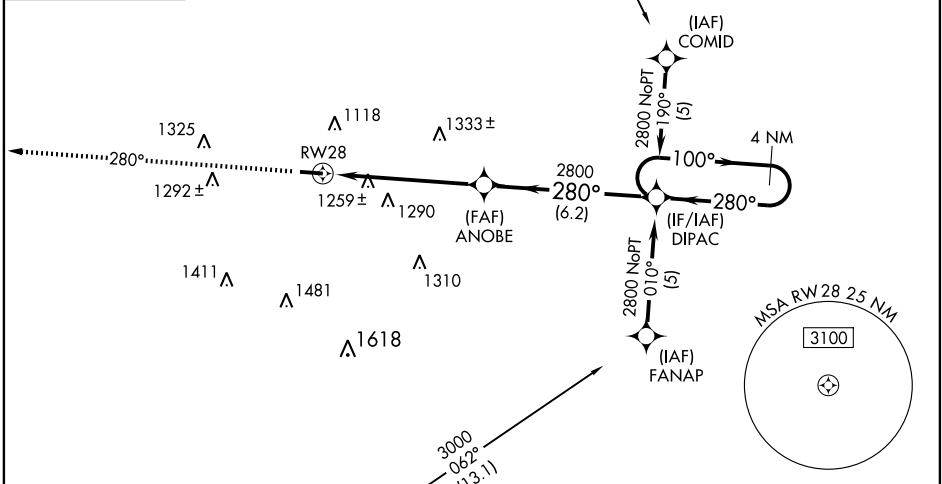
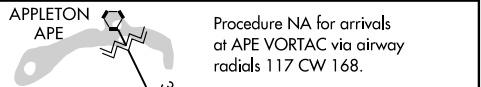
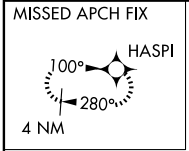
RNAV (GPS) RWY 28

LANCASTER/FAIRFIELD COUNTY (L.H.Q.)

APP CRS 280°	Rwy ldg TDZE Apt Elev	4725 864 868
------------------------	-----------------------------	---

▼ DME/DME RNP-0.3 NA. Visibility reduction by helicopters NA. When local altimeter setting not received, use Rickenbacker Intl altimeter setting and increase all MDAs 60 feet, and LNAV/Circling visibility Cat C ¼ mile.
▲ MISSED APPROACH: Climb to 2700 direct HASPI and hold.

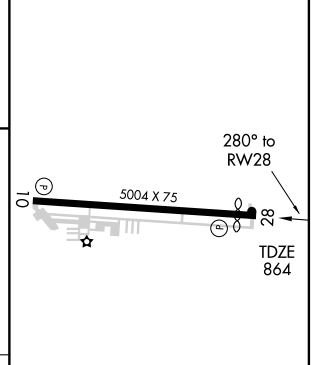
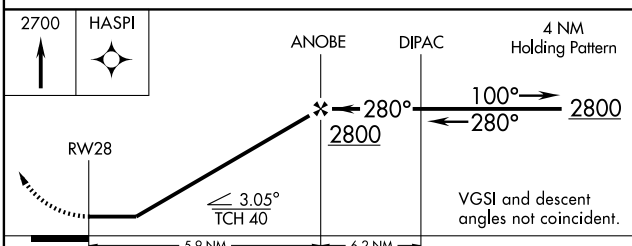
ASOS 118.375	COLUMBUS APP CON 132.3 279.6	CLNC DEL 121.65	UNICOM 122.725 (CTAF)
------------------------	--	---------------------------	---------------------------------



EC-2, 11 MAR 2010 to 08 APR 2010

EC-2, 11 MAR 2010 to 08 APR 2010

ELEV	868	Rwy 28 ldg	4725'
------	------------	------------	--------------



CATEGORY	A	B	C	D
LNAV MDA	1520-1	656 (700-1)	1520-1 ³ / ₄ 656 (700-1 ³ / ₄)	NA
CIRCLING	1520-1 652 (700-1)	1540-1 672 (700-1)	1560-2 692 (700-2)	NA

REIL Rwy 10 and 28 **Ⓛ**
 MIRL Rwy 10-28 **Ⓛ**

LANCASTER, OHIO
 Orig 08101

39°45'N - 82°39'W

RNAV (GPS) RWY 28