

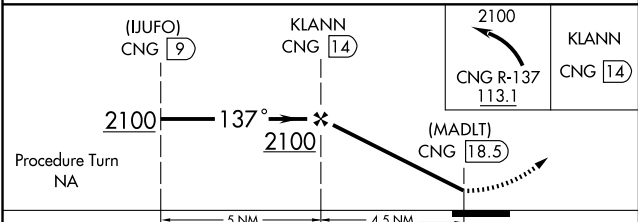
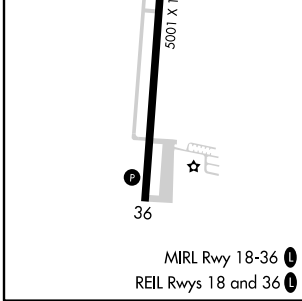
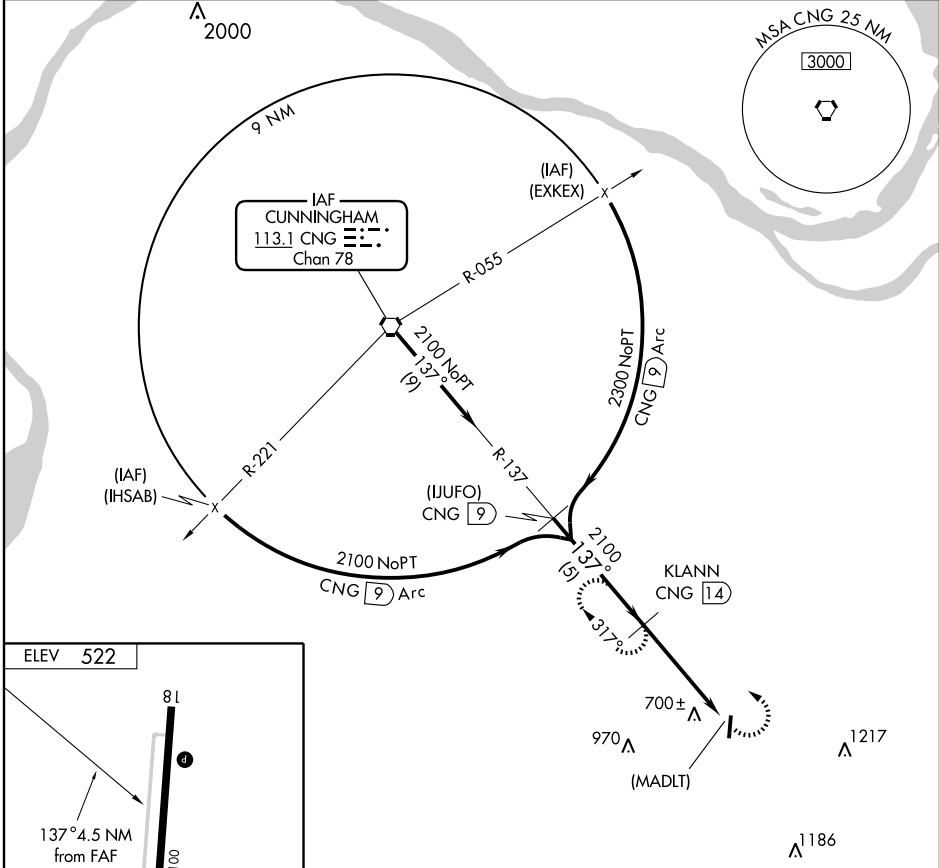
VOR/DME or GPS-A  
MAYFIELD GRAVES COUNTY (M25)

VORTAC CNG <b>113.1</b> Chan <b>78</b>	APP CRS <b>137°</b>	Rwy Idg TDZE Apt Elev	N/A N/A <b>522</b>
--	------------------------	-----------------------------	--------------------------

**NA** If local altimeter not received, use Paducah altimeter setting and increase all MDAs 60 feet.

MISSED APPROACH: Climbing left turn to 2100 via CNG R-137 to KLANN 14 DME and hold.

AWOS-3 <b>120.625</b>	MEMPHIS CENTER <b>133.65 292.15</b>	UNICOM <b>122.8</b> (CTAF) <b>0</b>
--------------------------	--	--



CATEGORY	A	B	C	D
CIRCLING	1060-1	538 (600-1)	1060-1½ 538 (600-1½)	1080-2 558 (600-2)

SE-1, 11 MAR 2010 to 08 APR 2010

SE-1, 11 MAR 2010 to 08 APR 2010