

MAYFIELD, KENTUCKY

AL-6223 (FAA)

| | | | |
|--|------------------------|-----------------------------|---|
| VORTAC CNG 113.1 Chan 78 | APP CRS 181° | Rwy Idg TDZE Apt Elev | 5001 520 522 |
|--|------------------------|-----------------------------|---|

VOR/DME RNAV or GPS RWY 18

MAYFIELD GRAVES COUNTY (M25)

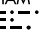
▲ If local altimeter not received, use Paducah altimeter setting and increase all MDAs 60 feet.

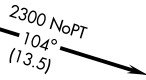
MISSED APPROACH: Climbing left turn to 2300 direct JOELY WP and hold.

AWOS-3
120.625

MEMPHIS CENTER
133.65 292.15

UNICOM
122.8 (CTAF) 0

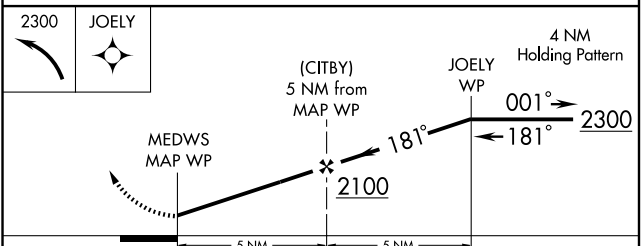
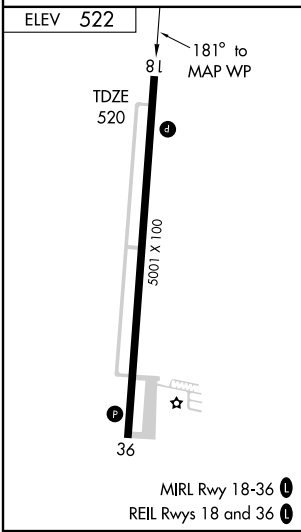
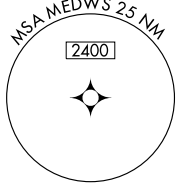
IAF
CUNNINGHAM
113.1 CNG 
Chan 78



(FAF)
(CITBY)
5 NM from MAP WP
N36° 51.52'-W88° 34.56'

MAP
MEDWS
N36° 46.53'-W88° 35.05'
113.1 CNG 136.0°-18.5

IAF
JOELY
N36° 56.51'-W88° 34.07'
113.1 CNG 104.1°-13.5



| CATEGORY | A | B | C | D |
|----------|--------|-------------|-------------------------|-------------------------|
| S-18 | 1000-1 | 480 (500-1) | 1000-1½ 480 (500-1½) | 1000-1½ 480 (500-1½) |
| CIRCLING | 1060-1 | 538 (600-1) | 1060-1½ 538 (600-1½) | 1080-2 558 (600-2) |

MAYFIELD, KENTUCKY
Amdt 3 08325

36° 46' N-88° 35' W

MAYFIELD GRAVES COUNTY (M25)

VOR/DME RNAV or GPS RWY 18

SE-1, 19 NOV 2009 to 17 DEC 2009

SE-1, 19 NOV 2009 to 17 DEC 2009