

MAYFIELD, KENTUCKY

AL-6223 (FAA)

# GPS RWY 36

MAYFIELD GRAVES COUNTY (M25)

APP CRS <b>004°</b>	Rwy Idg <b>5001</b>
	TDZE <b>522</b>
	Apt Elev <b>522</b>

**▽** If local altimeter setting not received, use Paducah altimeter setting and increase all MDAs 60 feet.

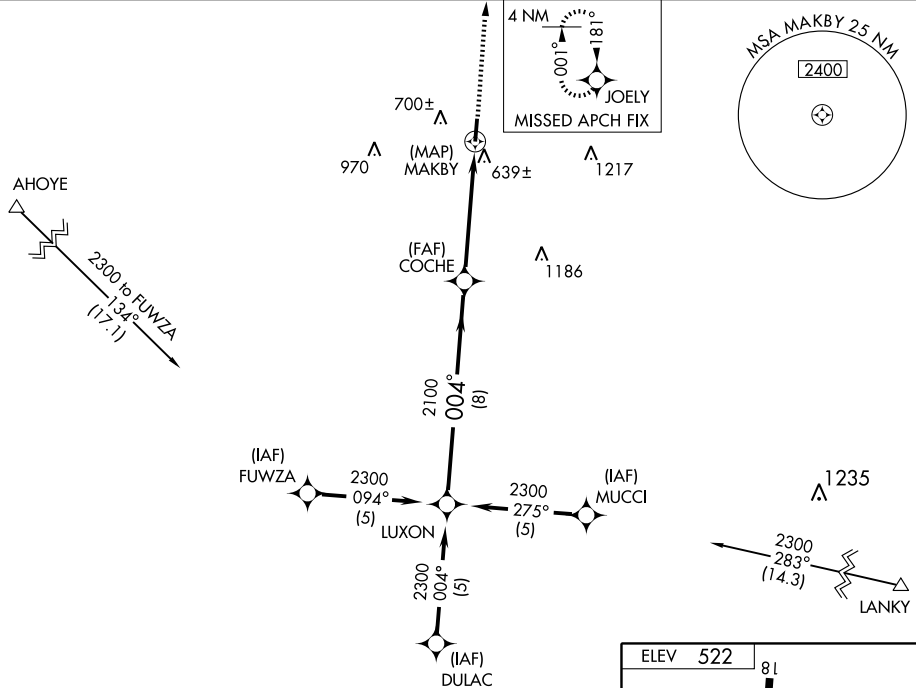
**△ NA**

**MISSED APPROACH:** Climb to 2300 via 004° course to JOELY WP and hold.

AWOS-3  
**120.625**

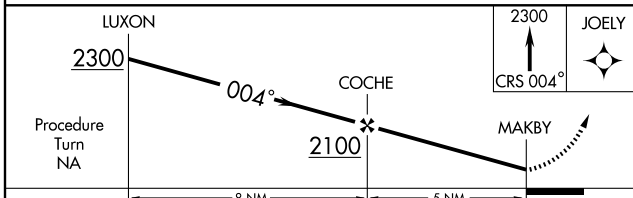
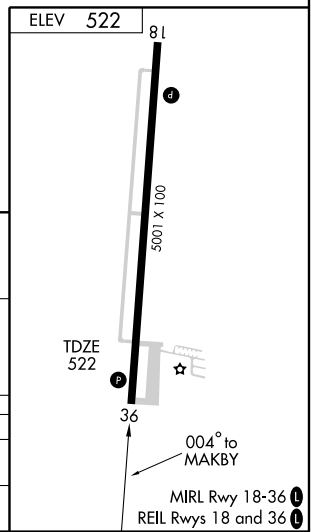
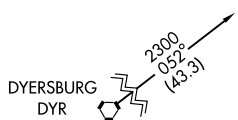
MEMPHIS CENTER  
**133.65 292.15**

UNICOM  
**122.8 (CTAF) 0**



SE-1, 11 MAR 2010 to 08 APR 2010

SE-1, 11 MAR 2010 to 08 APR 2010



CATEGORY	A	B	C	D
S-36	900-1 378 (400-1)			900-1½ 378 (400-1½)
CIRCLING	1060-1 538 (600-1)		1060-1½ 538 (600-1½)	1080-2 558 (600-2)

MAYFIELD, KENTUCKY  
Orig 08325

36° 46' N-88° 35' W

MAYFIELD GRAVES COUNTY (M25)  
**GPS RWY 36**