

MAYFIELD, KENTUCKY

AL-6223 (FAA)

NDB RWY 36

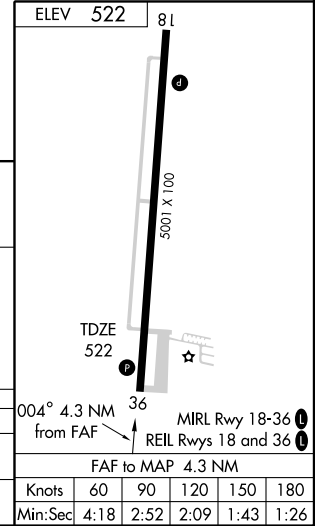
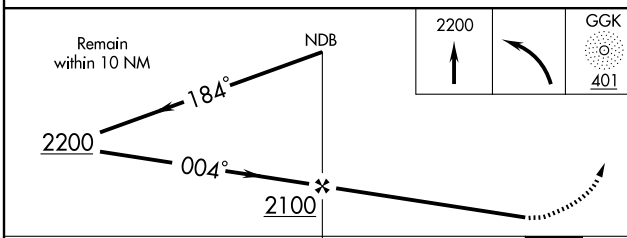
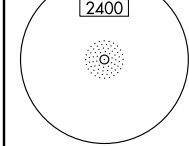
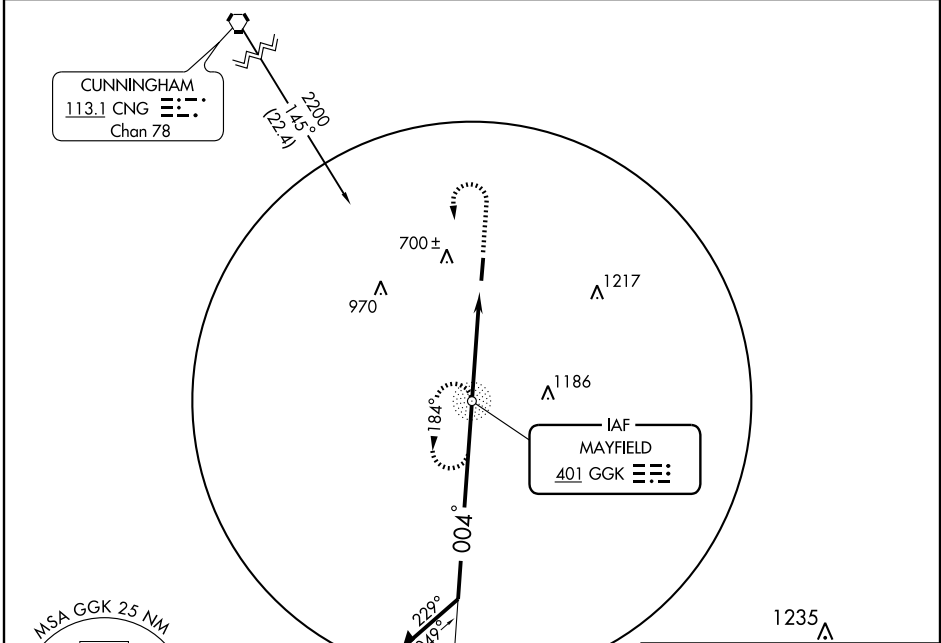
MAYFIELD GRAVES COUNTY (M25)

| | | | | |
|-----|------------|-------------|----------|-------------|
| NDB | GGK | APP CRS | Rwy Idg | 5001 |
| | 401 | 004° | TDZE | 522 |
| | | | Apt Elev | 522 |

▽ If local altimeter not received, use Paducah altimeter
△ NA setting and increase all MDAs 60 feet.

MISSED APPROACH: Climb to 2200 then left turn direct GGK NDB and hold.

| | | |
|--------------------------|--|---------------------------------|
| AWOS-3 120.625 | MEMPHIS CENTER 133.65 292.15 | UNICOM 122.8 (CTAF) 1 |
|--------------------------|--|---------------------------------|



| CATEGORY | A | B | C | D |
|----------|--------------------|---|----------------------|----------------------|
| S-36 | 1060-1 538 (600-1) | | 1060-1½ 538 (600-1½) | 1060-1¾ 538 (600-1¾) |
| CIRCLING | 1060-1 538 (600-1) | | 1060-1½ 538 (600-1½) | 1080-2 558 (600-2) |

MAYFIELD, KENTUCKY
 Amdt 2 08325

36° 46' N-88° 35' W

NDB RWY 36

SE-1, 19 NOV 2009 to 17 DEC 2009

SE-1, 19 NOV 2009 to 17 DEC 2009