

# GPS RWY 21

MOUNT STERLING-MONTGOMERY COUNTY (IOB)

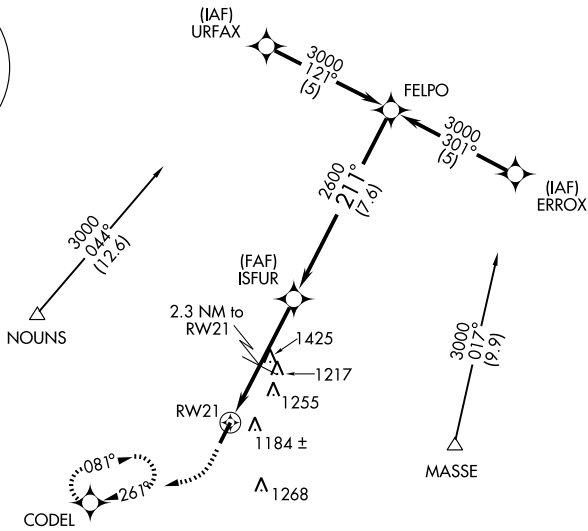
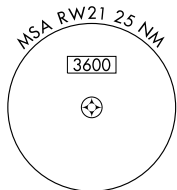
|                        |                         |
|------------------------|-------------------------|
| APP CRS<br><b>211°</b> | Rwy Idg<br><b>5002</b>  |
|                        | TDZE<br><b>1006</b>     |
|                        | Apt Elev<br><b>1019</b> |

**NA** MISSED APPROACH: Climb to 1800 then climbing right turn to 3000 direct CODEL WP and hold.

AWOS-3  
**120.675**

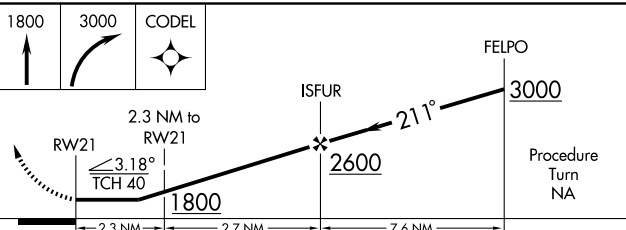
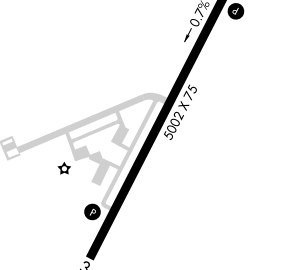
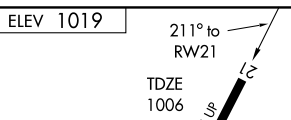
LEXINGTON APP CON  
**120.15 259.3**

UNICOM  
**122.8 (CTAF)**



SE-1, 11 MAR 2010 to 08 APR 2010

SE-1, 11 MAR 2010 to 08 APR 2010



| CATEGORY | A      | B           | C                       | D                       |
|----------|--------|-------------|-------------------------|-------------------------|
| S-21     | 1460-1 | 454 (500-1) | 1460-1¼<br>454 (500-1¼) | 1460-1½<br>454 (500-1½) |
| CIRCLING | 1540-1 | 521 (600-1) | 1540-1½<br>521 (600-1½) | 1580-2<br>561 (600-2)   |

MIRL Rwy 3-21  
REIL Rws 3 and 21

# GPS RWY 21