

# GPS RWY 21

MOUNT STERLING-MONTGOMERY COUNTY (IOB)

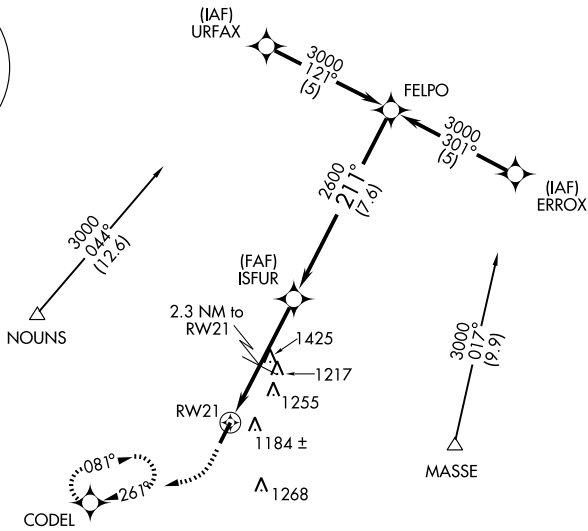
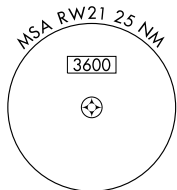
APP CRS <b>211°</b>	Rwy Idg <b>5002</b>
	TDZE <b>1006</b>
	Apt Elev <b>1019</b>

**NA** MISSED APPROACH: Climb to 1800 then climbing right turn to 3000 direct CODEL WP and hold.

AWOS-3  
**120.675**

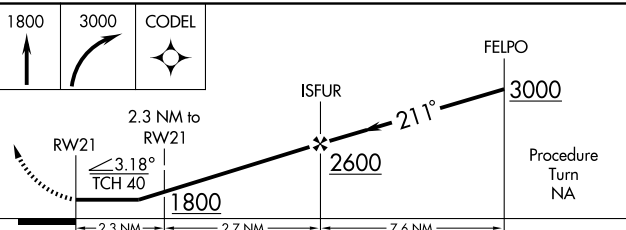
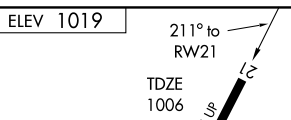
LEXINGTON APP CON  
**120.15 259.3**

UNICOM  
**122.8 (CTAF)**



SE-1, 19 NOV 2009 to 17 DEC 2009

SE-1, 19 NOV 2009 to 17 DEC 2009



CATEGORY	A	B	C	D
S-21	1460-1	454 (500-1)	1460-1¼ 454 (500-1¼)	1460-1½ 454 (500-1½)
CIRCLING	1540-1	521 (600-1)	1540-1½ 521 (600-1½)	1580-2 561 (600-2)

MIRL Rwy 3-21  
REIL Rws 3 and 21

# GPS RWY 21