

MOUNT STERLING, KENTUCKY

AL-6224 (FAA)

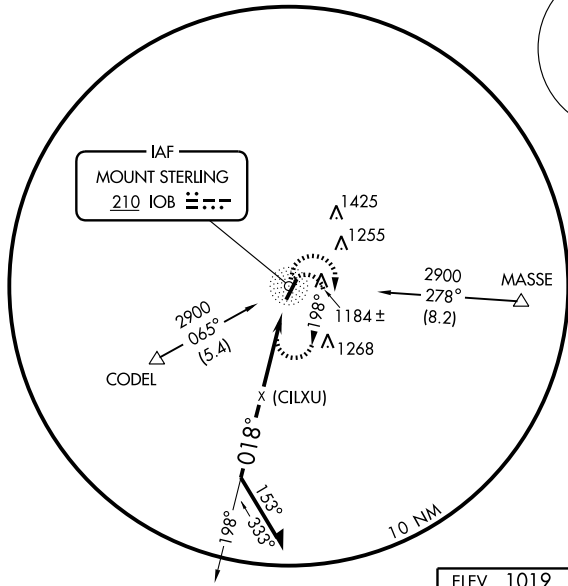
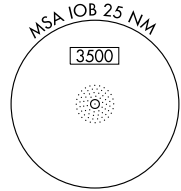
NDB or GPS RWY 3

MOUNT STERLING-MONTGOMERY COUNTY (IOB)

NDB IOB 210	APP CRS 018°	Rwy Idg TDZE Apt Elev	5002 1020 1019
-----------------------	------------------------	-----------------------------	---

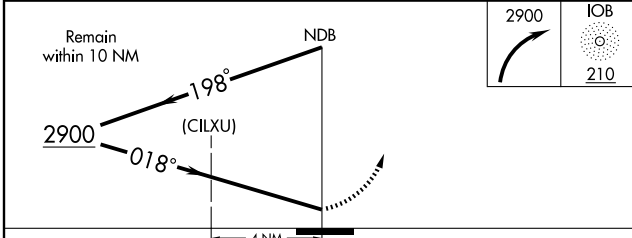
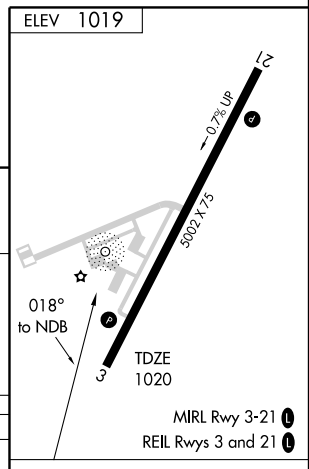
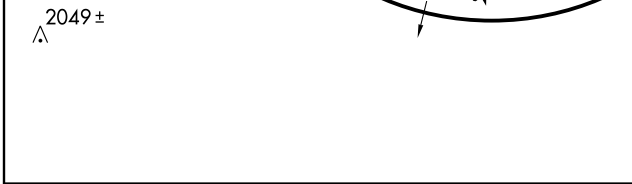
MISSED APPROACH: Climbing right turn to 2900 in IOB NDB holding pattern.

AWOS-3 120.675	LEXINGTON APP CON 120.15 259.3	UNICOM 122.8 (CTAF)
--------------------------	--	-------------------------------



SE-1, 19 NOV 2009 to 17 DEC 2009

SE-1, 19 NOV 2009 to 17 DEC 2009



CATEGORY	A	B	C	D
S-3	1660-1 640 (700-1)	1660-1 640 (700-1)	1660-1 640 (700-1)	1660-2 640 (700-2)
CIRCLING	1660-1 640 (700-1)	1660-1 640 (700-1)	1660-1 640 (700-1)	1660-2 640 (700-2)

MIRL Rwy 3-21	REIL Rws 3 and 21				
Knots	60	90	120	150	180
Min:Sec					

MOUNT STERLING, KENTUCKY
Amdt 1C 06159

MOUNT STERLING-MONTGOMERY COUNTY (IOB)
38°03'N-83°59'W
NDB or GPS RWY 3