

MURRAY, KENTUCKY

AL-6225 (FAA)

# LOC RWY 23

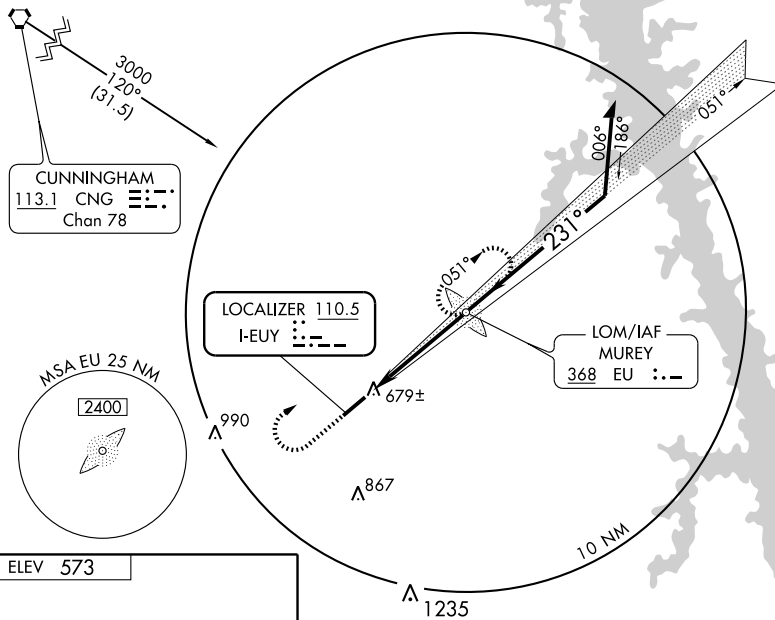
MURRAY/ KYLE-OAKLEY FIELD (CEY)

LOC I-EUY <b>110.5</b>	APP CRS <b>231°</b>	Rwy Idg TDZE Apt Elev	<b>6203</b> <b>567</b> <b>573</b>
---------------------------	------------------------	-----------------------------	---

**NA** MISSED APPROACH: Climb to 1200 then climbing right turn to 2100 direct EU LOM and hold.

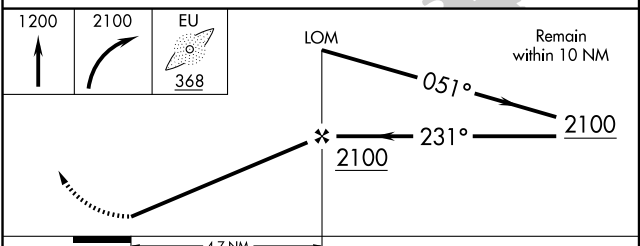
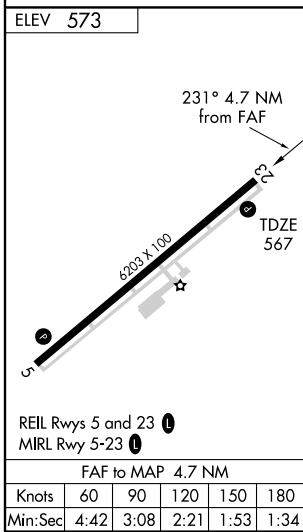
AWOS-3 <b>119.975</b>	MEMPHIS CENTER <b>133.65 292.15</b>	UNICOM <b>122.7 (CTAF)</b>
--------------------------	--	-------------------------------

## ADF REQUIRED



SE-1, 19 NOV 2009 to 17 DEC 2009

SE-1, 19 NOV 2009 to 17 DEC 2009



CATEGORY	A	B	C	D
S-23	940-1 373 (400-1)			940-1¼ 373 (400-1¼)
CIRCLING	1000-1 427 (500-1)	1040-1 467 (500-1)	1040-1½ 467 (500-1½)	1140-2 567 (600-2)

MURRAY, KENTUCKY  
Amdt 1 09183

36° 40-N-88° 22'W

MURRAY/ KYLE-OAKLEY FIELD (CEY)  
**LOC RWY 23**