

MURRAY, KENTUCKY

AL-6225 (FAA)

# GPS RWY 23

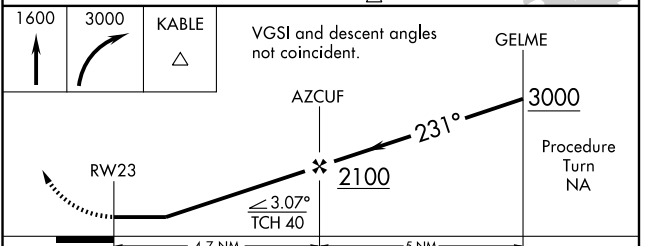
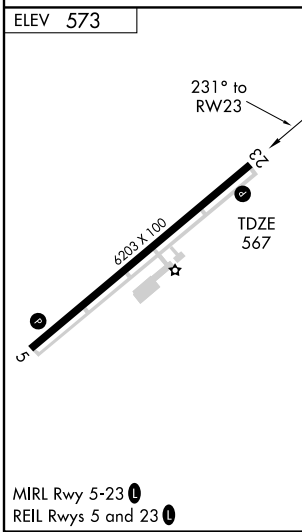
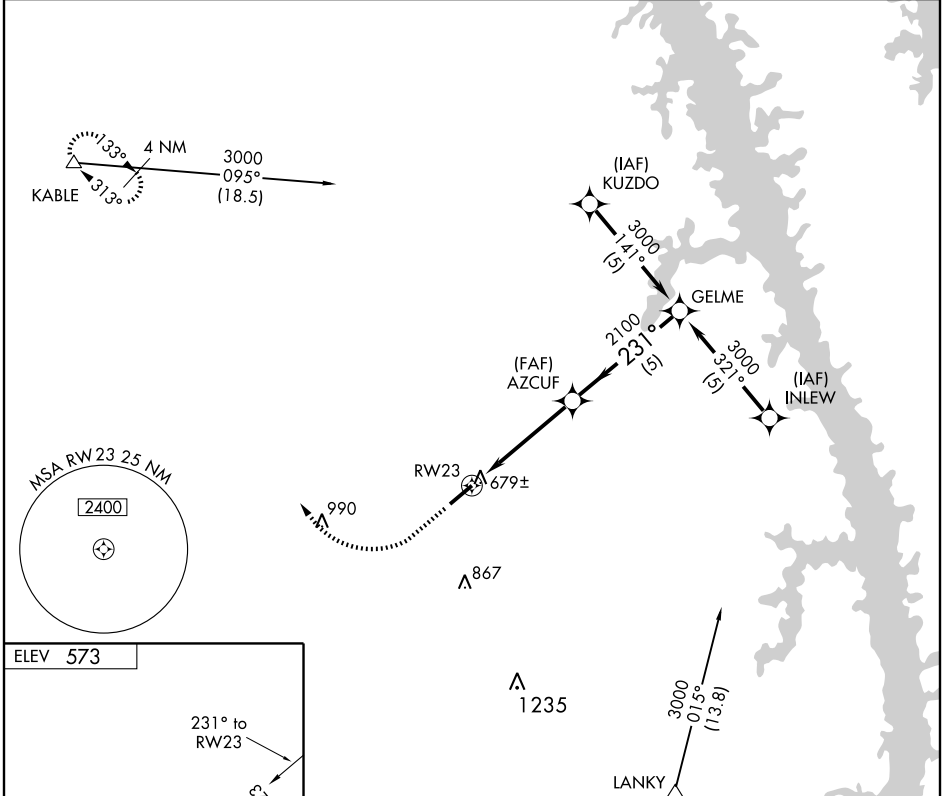
MURRAY/ KYLE-OAKLEY FIELD (CEY)

APP CRS <b>231°</b>	Rwy Idg <b>6203</b>
	TDZE <b>567</b>
	Apt Elev <b>573</b>

**▽**  
**△** NA

MISSED APPROACH: Climb to 1600 then climbing right turn to 3000 direct KABLE WP and hold.

AWOS-3 <b>119.975</b>	MEMPHIS CENTER <b>133.65 292.15</b>	UNICOM <b>122.7 (CTAF) 0</b>
--------------------------	--	---------------------------------



CATEGORY	A	B	C	D
S-23	940-1 373 (400-1)			940-1¼ 373 (400-1¼)
CIRCLING	1000-1 427 (500-1)	1040-1 467 (500-1)	1040-1½ 467 (500-1½)	1140-2 567 (600-2)

MURRAY, KENTUCKY  
Amdt 1 09183

36° 40-N-88° 22'W

MURRAY/ KYLE-OAKLEY FIELD (CEY)

# GPS RWY 23

SE-1, 19 NOV 2009 to 17 DEC 2009

SE-1, 19 NOV 2009 to 17 DEC 2009