

MURRAY, KENTUCKY

AL-6225 (FAA)

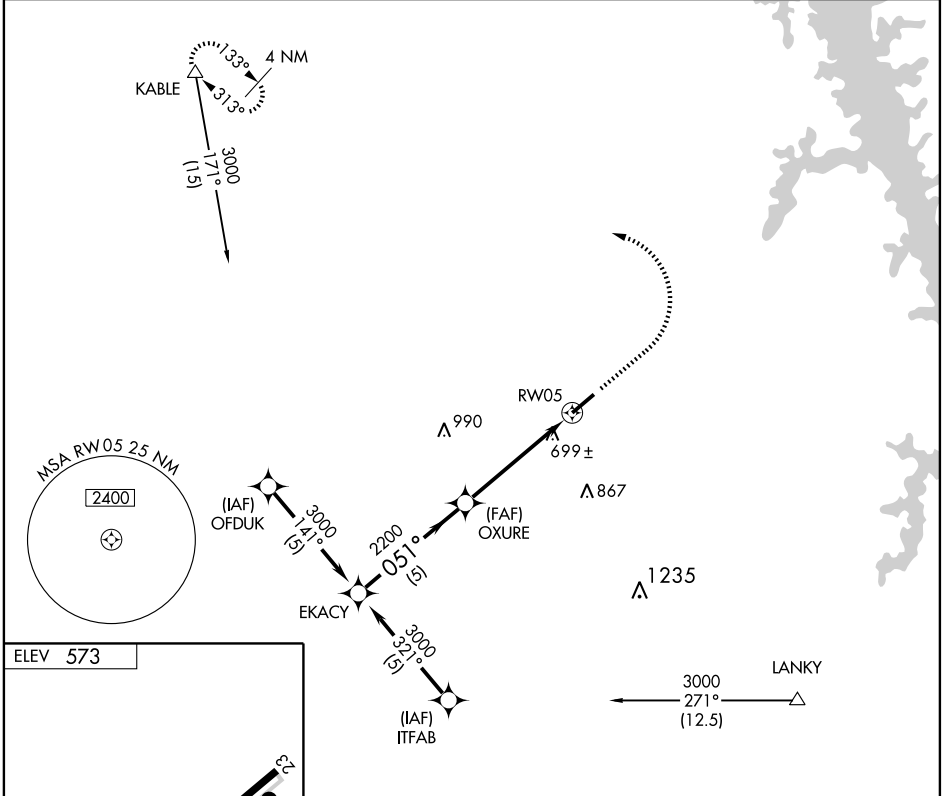
APP CRS	Rwy Idg	6203
051°	TDZE	573
	Apt Elev	573

GPS RWY 5

MURRAY/ KYLE-OAKLEY FIELD (CEY)

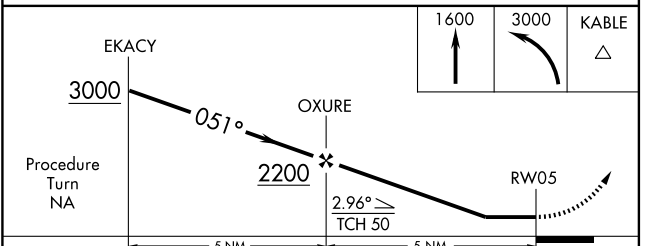
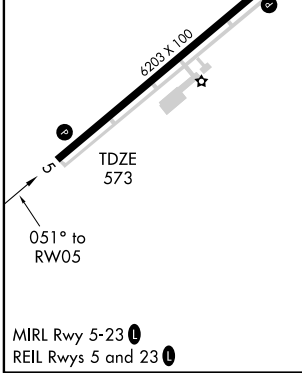
<p>▼</p> <p>▲ NA</p>	<p>MISSED APPROACH: Climb to 1600 then climbing left turn to 3000 direct KABLE WP and hold.</p>
----------------------	---

<p>AWOS-3</p> <p>119.975</p>	<p>MEMPHIS CENTER</p> <p>133.65 292.15</p>	<p>UNICOM</p> <p>122.7 (CTAF) 0</p>
-------------------------------------	---	--



SE-1, 11 MAR 2010 to 08 APR 2010

SE-1, 11 MAR 2010 to 08 APR 2010



CATEGORY	A	B	C	D
S-5	960-1 387 (400-1)			960-1¼ 387 (400-1¼)
CIRCLING	1000-1 427 (500-1)	1040-1 467 (500-1)	1040-1½ 467 (500-1½)	1140-2 567 (600-2)

MURRAY, KENTUCKY
Amdt 1 09183

36° 40-N-88° 22'W

MURRAY/ KYLE-OAKLEY FIELD (CEY)
GPS RWY 5