

VAN HORN, TEXAS

AL-6227 (FAA)

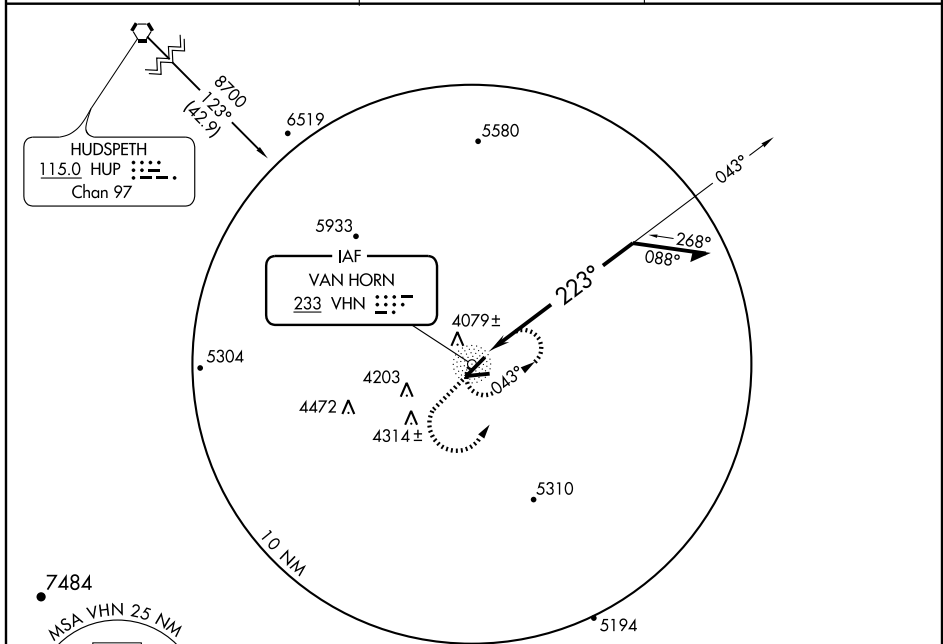
NDB RWY 21

VAN HORN/CULBERSON COUNTY (VHN)

NDB VHN 233	APP CRS 223°	Rwy Idg 6000
		TDZE 3939
		Apt Elev 3957

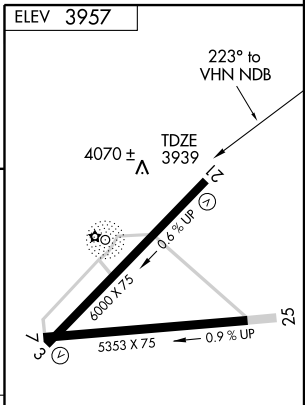
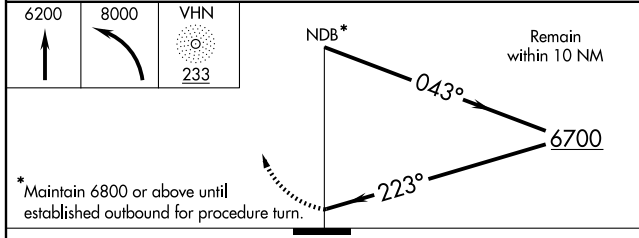
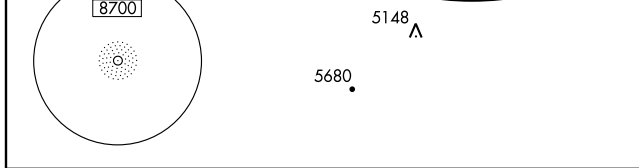
▼ Obtain local altimeter setting on CTAF; when not received, MISSED APPROACH: Climb to 6200 then climbing left turn to 8000 direct VHN NDB and hold.
▲ NA procedure not authorized.

ALBUQUERQUE CENTER 135.875 292.15	CTAF 122.9 0	GCO 121.725
---	------------------------	-----------------------



SC-3, 11 MAR 2010 to 08 APR 2010

SC-3, 11 MAR 2010 to 08 APR 2010



CATEGORY	A	B	C	D
S-21	4400-1	501 (500-1)	4440-1½	501 (500-1½)
CIRCLING	4440-1 483 (500-1)	4460-1 503 (600-1)	4480-1½ 523 (600-1½)	4840-3 883 (900-3)

Knots	60	90	120	150	180
Min:Sec					

VAN HORN, TEXAS
Amdt 2 04330

31°03' N-104°47' W

VAN HORN/CULBERSON COUNTY (VHN)
NDB RWY 21