

RNAV (GPS) RWY 22

MALVERN MUNI (M78)

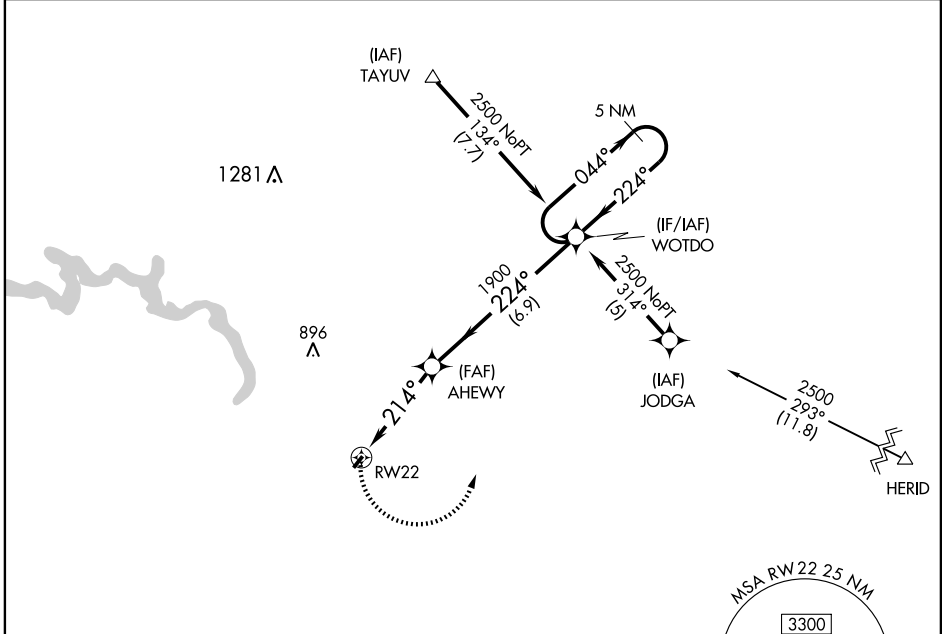
APP CRS 214°	Rwy Idg 2812
	TDZE 538
	Apt Elev 538

▼ Use Hot Springs altimeter setting; if not received, use Adams Field altimeter setting and increase all MDAs 80 feet. DME/DME RNP-0.3 NA.

▲ NA

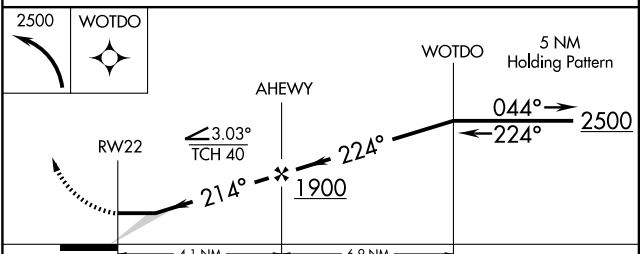
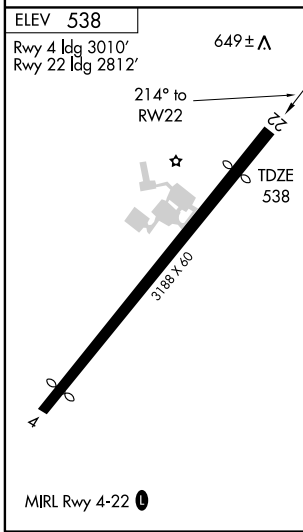
MISSED APPROACH: Climbing left turn to 2500 direct WOTDO and hold.

MEMPHIS CENTER 128.475 377.15	UNICOM 122.8 (CTAF) 0
---	---------------------------------



SC-1, 11 MAR 2010 to 08 APR 2010

SC-1, 11 MAR 2010 to 08 APR 2010



CATEGORY	A	B	C	D
LNAV MDA	960-1	422 (500-1)	NA	
CIRCLING	1000-1	462 (500-1)	NA	