

RUSSELLVILLE, ARKANSAS

AL-6231 (FAA)

# RNAV (GPS) RWY 25

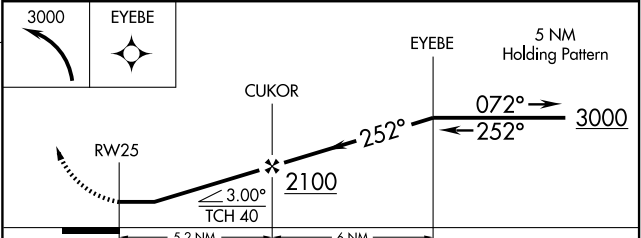
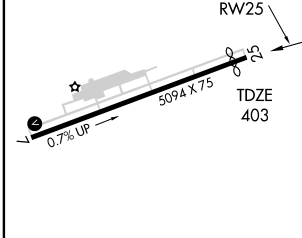
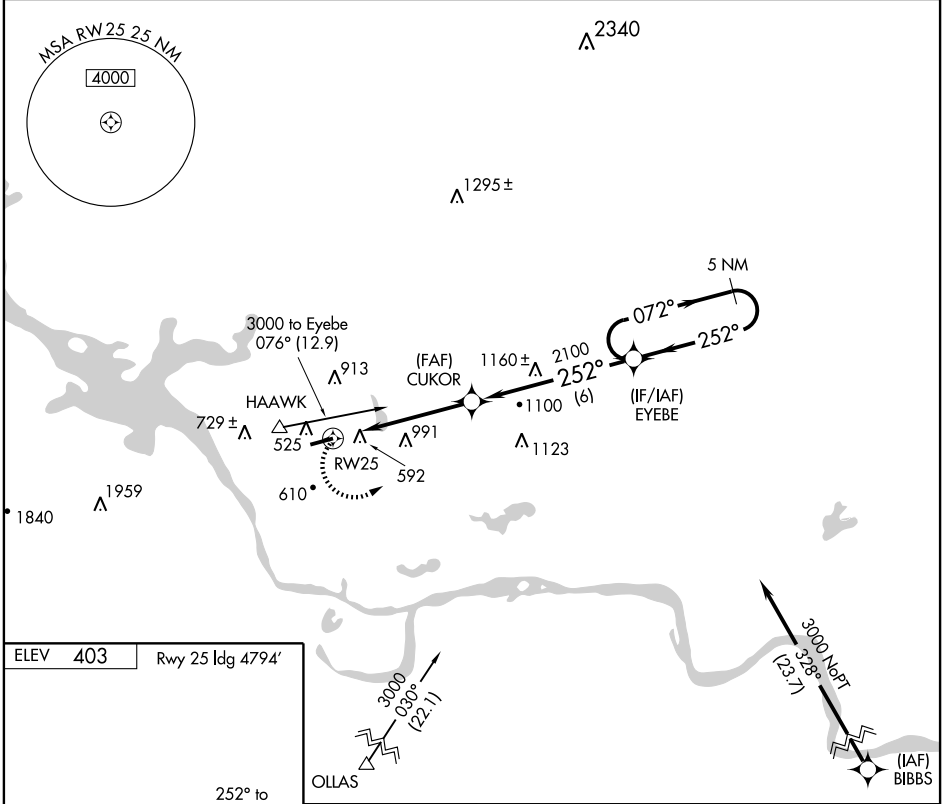
RUSSELLVILLE RGNL (RUE)

APP CRS <b>252°</b>	Rwy ldg <b>4794</b>
	TDZE <b>403</b>
	Apt Elev <b>403</b>

**▽** GPS or RNP-0.3 Required. DME/DME RNP-0.3 NA. **▲ NA**

**MISSED APPROACH:** Climbing left turn to 3000 direct EYEBE WP and hold.

ASOS <b>132.475</b>	RAZORBACK APP CON <b>120.9 343.75</b>	MEMPHIS CENTER <b>128.475 377.15</b>	UNICOM <b>122.7 (CTAF) 0</b>
------------------------	--	---	---------------------------------



CATEGORY	A	B	C	D
LNAV MDA	1260-1 857 (900-1)	1260-1¼ 857 (900-1¼)	1260-2½ 857 (900-2½)	1260-2¾ 857 (900-2¾)
CIRCLING	1260-1 857 (900-1)	1260-1¼ 857 (900-1¼)	1260-2½ 857 (900-2½)	1260-2¾ 857 (900-2¾)

RUSSELLVILLE, ARKANSAS  
Orig-A 08101

35°16'N-93°06'W

# RNAV (GPS) RWY 25

SC-1, 11 MAR 2010 to 08 APR 2010

SC-1, 11 MAR 2010 to 08 APR 2010