

RUSSELLVILLE, ARKANSAS

AL-6231 (FAA)

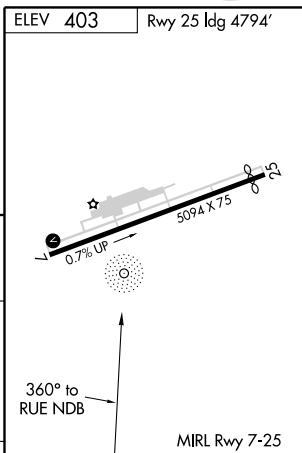
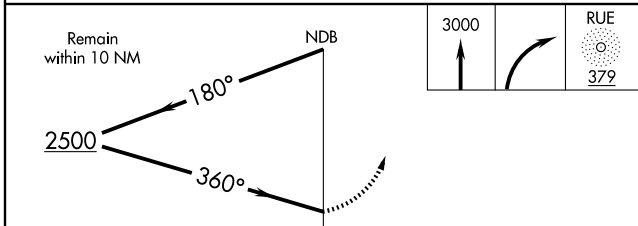
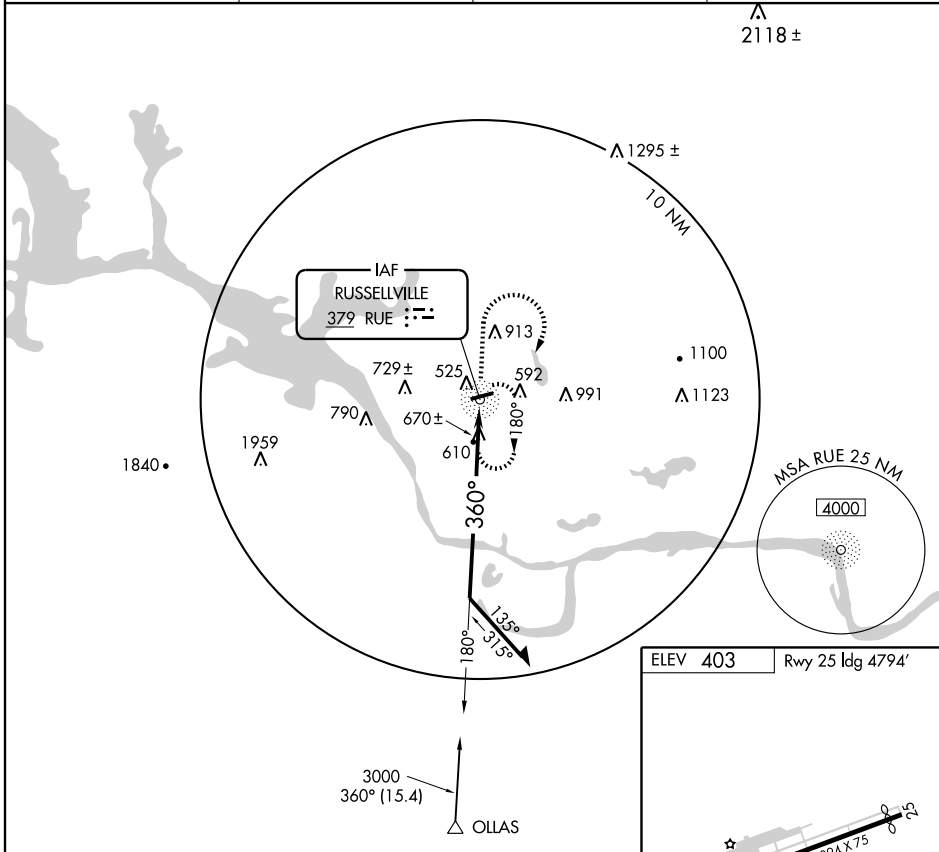
NDB-A

RUSSELLVILLE RGNL (RUE)

NDB RUE 379	APP CRS 360°	Rwy Idg TDZE Apt Elev	N/A N/A 403
-----------------------	------------------------	-----------------------------	--

<p>▽</p> <p>▲ NA</p>	<p>MISSED APPROACH: Climb to 3000 then right turn direct RUE NDB and hold.</p>		
----------------------	--	--	--

ASOS 132.475	RAZORBACK APP CON 120.9 343.75	MEMPHIS CENTER 128.475 377.15	UNICOM 122.7 (CTAF) 0
------------------------	--	---	--



CATEGORY	A	B	C	D	Knots	60	90	120	150	180
CIRCLING	1140-1	737 (800-1)	1140-2 737 (800-2)	1220-2¾ 817 (900-2¾)	Min:Sec					

RUSSELLVILLE, ARKANSAS

Amdt 4B 08101

35°16'N-93°06'W

RUSSELLVILLE RGNL (RUE)

NDB-A

SC-1, 19 NOV 2009 to 17 DEC 2009

SC-1, 19 NOV 2009 to 17 DEC 2009