

WEST UNION, OHIO

AL-6236 (FAA)

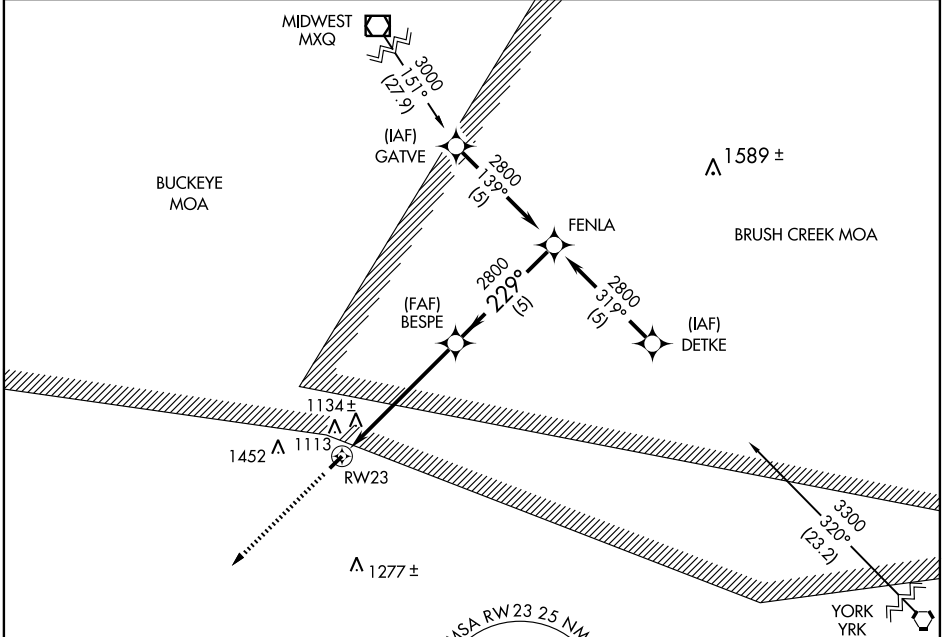
# RNAV (GPS) RWY 23

WEST UNION/ALEXANDER SALAMON (AMT)

APP CRS <b>229°</b>	Rwy Idg <b>3762</b>
	TDZE <b>896</b>
	Apt Elev <b>896</b>

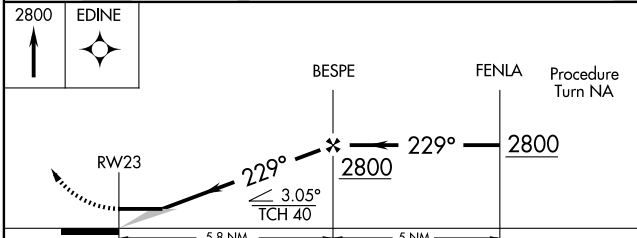
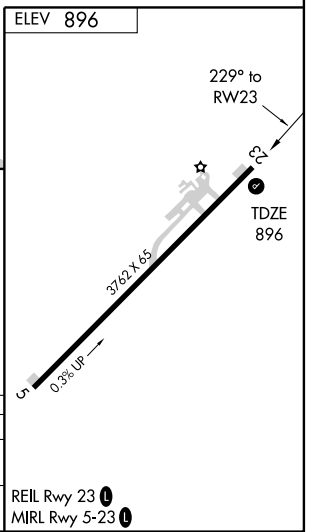
Use Flemingsburg, Kentucky altimeter setting.  
 MISSED APPROACH: Climb to 2800 direct EDINE WP and hold.

FLEMINGSBURG AWOS-3 <b>118.125</b>	INDIANAPOLIS CENTER <b>124.225 327.05</b>	UNICOM <b>122.8 (CTAF)</b>
---------------------------------------	--	-------------------------------



EC-2, 19 NOV 2009 to 17 DEC 2009

EC-2, 19 NOV 2009 to 17 DEC 2009



CATEGORY	A	B	C	D
LNAV MDA	1440-1	544 (600-1)	1440-1½ 544 (600-1½)	NA
CIRCLING	1600-1	704 (800-1)	1600-2 704 (800-2)	NA

WEST UNION, OHIO  
Orig-A 08213

38°51'N - 83°34'W

# RNAV (GPS) RWY 23