

WEST UNION, OHIO

AL-6236 (FAA)

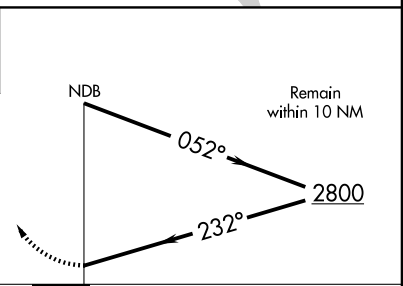
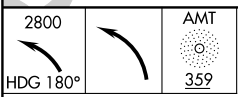
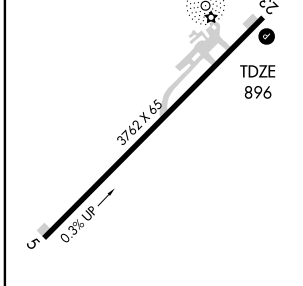
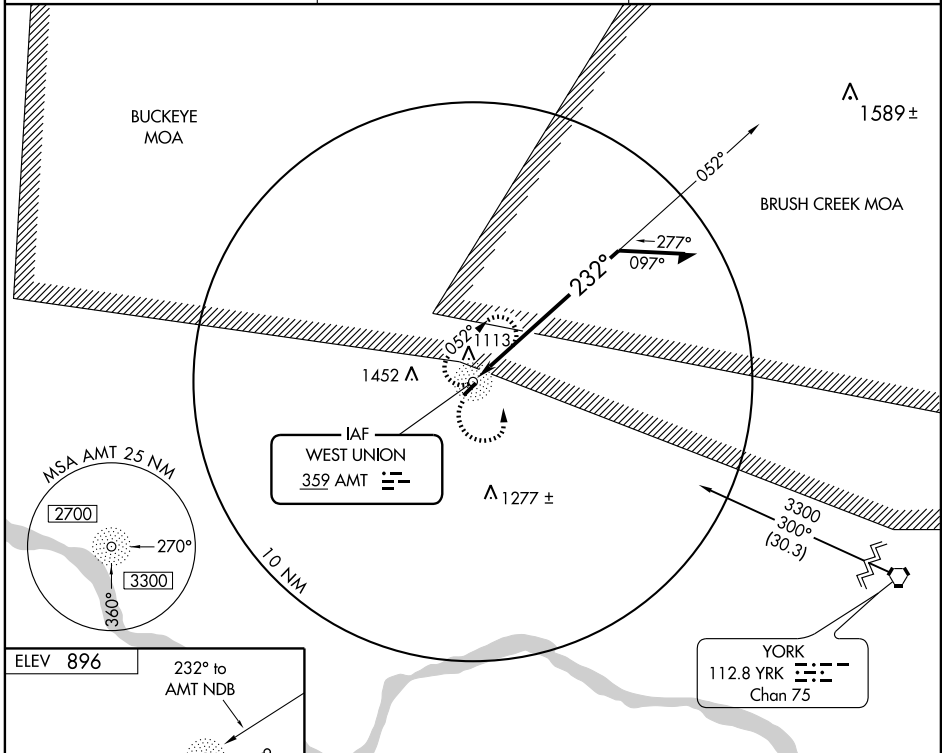
# NDB RWY 23

WEST UNION/ALEXANDER SALAMON (AMT)

NDB AMT <b>359</b>	APP CRS <b>232°</b>	Rwy Idg TDZE Apt Elev	<b>3762</b> <b>896</b> <b>896</b>
-----------------------	------------------------	-----------------------------	-----------------------------------------

▼ Use Flemingsburg, Kentucky altimeter setting.  
▲ NA MISSED APPROACH: Climbing left turn to 2800 via heading 180°, then left turn direct AMT NDB and hold.

FLEMINGSBURG AWOS-3 <b>118.125</b>	INDIANAPOLIS CENTER <b>124.225 327.05</b>	UNICOM <b>122.8 (CTAF) 0</b>
---------------------------------------	----------------------------------------------	---------------------------------



REL Rwy 23 0  
 MRL Rwy 5-23 0

Knots	60	90	120	150	180
Min:Sec					

CATEGORY	A	B	C	D
S-23	1660-1 764 (800-1)	1660-1¼ 764 (800-1¼)	1660-2¼ 764 (800-2¼)	NA
CIRCLING	1660-1 764 (800-1)	1660-1¼ 764 (800-1¼)	1660-2¼ 764 (800-2¼)	NA

WEST UNION, OHIO  
Amdt 4A 08213

WEST UNION/ALEXANDER SALAMON (AMT)  
38°51'N - 83°34'W

# NDB RWY 23

EC-2, 19 NOV 2009 to 17 DEC 2009

EC-2, 19 NOV 2009 to 17 DEC 2009