

OZARK, ARKANSAS

AL-6237 (FAA)

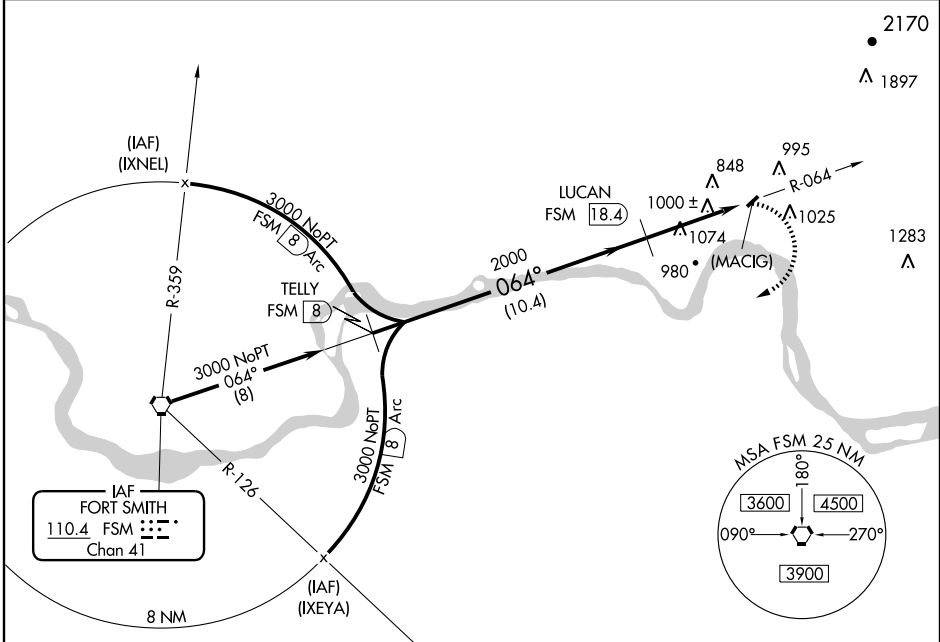
VORTAC FSM 110.4 Chan 41	APP CRS 064°	Rwy Idg TDZE Apt Elev N/A N/A 648
--	------------------------	---

VOR/DME or GPS-A
OZARK-FRANKLIN COUNTY (7M5)

Use Fort Smith altimeter setting.
 MISSED APPROACH: Climbing right turn to 3000 via R-064 to FSM VORTAC.

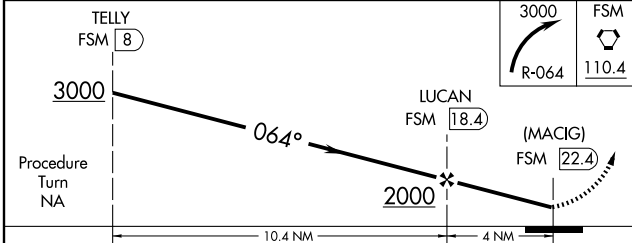
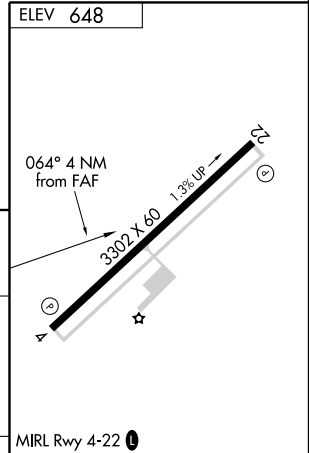
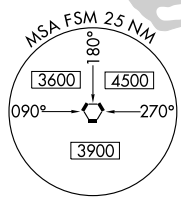
RAZORBACK APP CON ★
120.9 343.75

UNICOM
122.8 (CTAF)



SC-1, 19 NOV 2009 to 17 DEC 2009

SC-1, 19 NOV 2009 to 17 DEC 2009



CATEGORY	A	B	C	D
CIRCLING	1440-1 794 (800-1)	1440-1¼ 794 (800-1¼)	1440-2¼ 794 (800-2¼)	NA

ELEV 648					
Knots	60	90	120	150	180
Min:Sec					

OZARK, ARKANSAS
Amdt 3A 03303

35°31' N-93°50' W

OZARK-FRANKLIN COUNTY (7M5)
VOR/DME or GPS-A