

APP CRS <b>314°</b>	Rwy Idg TDZE Apt Elev	<b>6631</b> <b>5290</b> <b>5318</b>
------------------------	-----------------------------	---

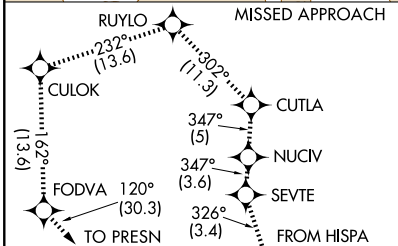
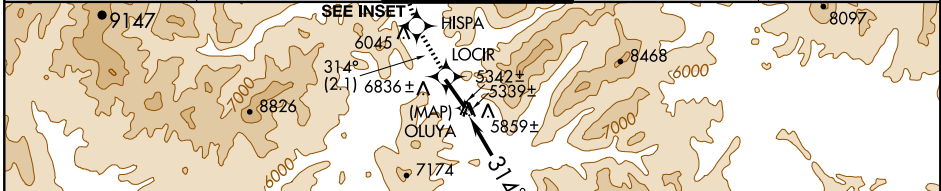
# RNAV (RNP) Y RWY 31

HAILEY/FRIEDMAN MEMORIAL (SUN)

**GPS required.** When VGSI inoperative, procedure NA at night.  
 For uncompensated Baro-VNAV systems, procedure NA below -25°C (-14°F) or above 37°C (99°F).  
 Missed approach requires RNP less than 1.0 and minimum climb of 330 feet per NM to 14500. Visibility reduction by helicopters NA.  
 Final approach course offset 5.00°.

**MISSED APPROACH:** Climb to 15000 via 314° track to LOCIR, 314° track to HISP, 326° track to SEVTE, 347° track to NUCIV, 347° track to CUTLA, 302° track to RUYLO, 232° track to CULOK, 162° track to FODVA, 120° track to PRESN and hold.

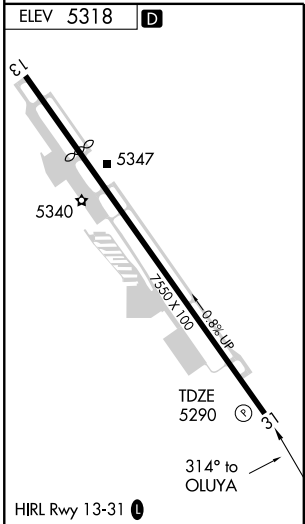
ATIS <b>128.225</b>	SALT LAKE CENTER <b>118.05 353.0</b>	HAILEY TOWER* <b>125.6</b> (CTAF) <b>0</b>	GND CON <b>121.7</b>	UNICOM <b>122.95</b>
------------------------	---	---	-------------------------	-------------------------



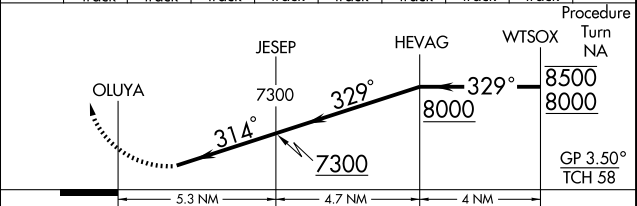
(RNP 0.60) (IAF) SOLDE  
 17200  
 SOLDE: 11400 089° (11.8)  
 Procedure NA V101 SW Bnd; V444 NW Bnd

(RNP 0.60) (IAF) PRESN  
 11700  
 11400  
 Max 230 KIAS  
 8000 039° (7.6)  
 8 NM  
 269°  
 PRESN: Procedure NA V500 W Bnd; V484 S Bnd

(RNP 0.60) (IAF) REAPS  
 10500  
 8000 317° (7.2)  
 8000 233° (14.6)  
 MENIN: Procedure NA V500 E Bnd; V231 S Bnd (RNP 0.60) (IAF) MENIN T2500



15000	LOCIR	HISP	SEVTE	NUCIV	CUTLA	RUYLO	CULOK	FODVA	PRESN
	314° track	314° track	326° track	347° track	347° track	302° track	232° track	162° track	120° track



CATEGORY	A	B	C	D
RNP 0.30 DA	6264-3	974 (1000-3)		NA

**SPECIAL AIRCRAFT & AIRCREW AUTHORIZATION REQUIRED**

NW-1, 11 MAR 2010 to 08 APR 2010

NW-1, 11 MAR 2010 to 08 APR 2010