

HANNIBAL, MISSOURI

AL-6245 (FAA)

# NDB RWY 35

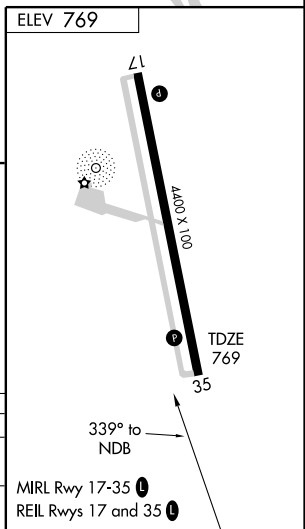
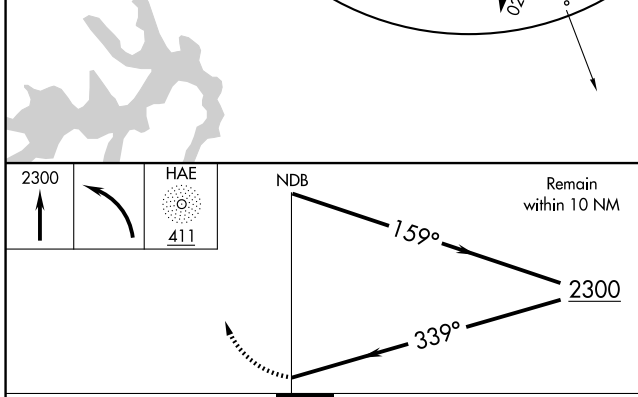
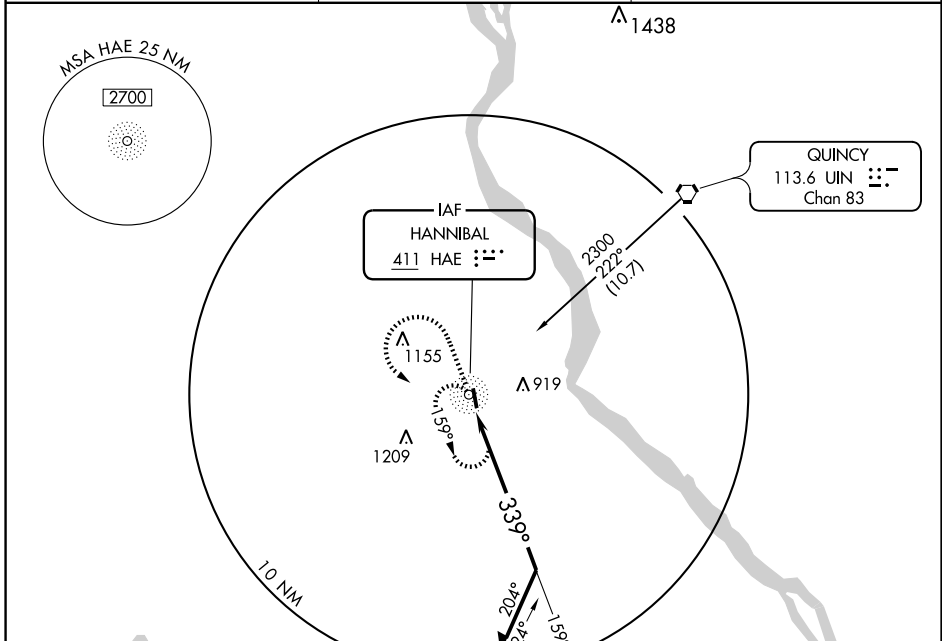
HANNIBAL RGNL (HAE)

HAE NDB <b>411</b>	APP CRS <b>339°</b>	Rwy Idg TDZE Apt Elev	<b>4400</b> <b>769</b> <b>769</b>
-----------------------	------------------------	-----------------------------	---

**▽** Visibility reduction by helicopters NA.  
**△ NA** When local altimeter setting not received, use Quincy altimeter setting and increase all MDA 60 feet and Cat C visibilities ¼ mile.

**MISSED APPROACH:** Climb to 2300 then left turn direct HAE NDB and hold.

AWOS-3 <b>120.775</b>	KANSAS CITY CENTER <b>135.525 319.9</b>	UNICOM <b>122.8</b> (CTAF) <b>0</b>
--------------------------	--	--



CATEGORY	A	B	C	D
S-35	1380-1	611 (700-1)	1380-1¾ 611 (700-1¾)	NA
CIRCLING	1380-1	611 (700-1)	1380-1¾ 611 (700-1¾)	NA

HANNIBAL, MISSOURI  
Amdt 4 09127

39°43' N - 91°27' W

# HANNIBAL RGNL (HAE)

## NDB RWY 35

NC-3, 11 MAR 2010 to 08 APR 2010

NC-3, 11 MAR 2010 to 08 APR 2010