

RNAV (GPS) RWY 17

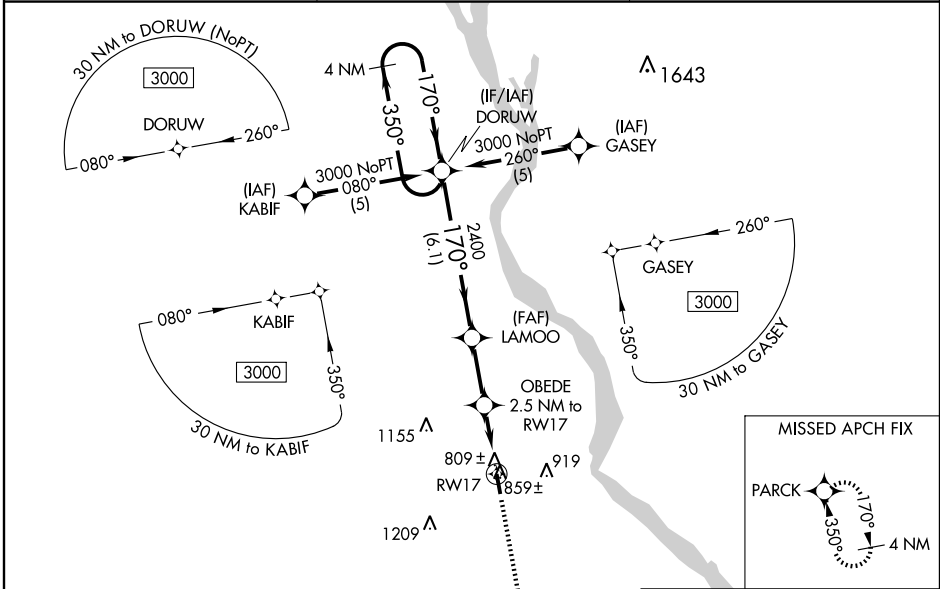
HANNIBAL RGNL (H.A.E.)

WAAS CH 62812 W17A	APP CRS 170°	Rwy Idg TDZE 4400 769 Apt Elev 769
---------------------------------	------------------------	--

▽ For uncompensated Baro-VNAV systems, LNAV/VNAV NA below -16°C (4°F) or above 54°C (130°F).
△ NA DME/DME RNP-0.3 NA. Visibility reduction by helicopters NA.
 When local altimeter setting not received, use Quincy altimeter setting and increase all DA 41 feet, all MDA 60 feet, increase LNAV Cat C visibility ¼ mile. Baro-VNAV and VDP NA when using Quincy altimeter setting.

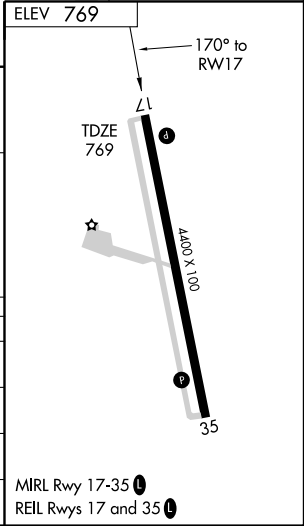
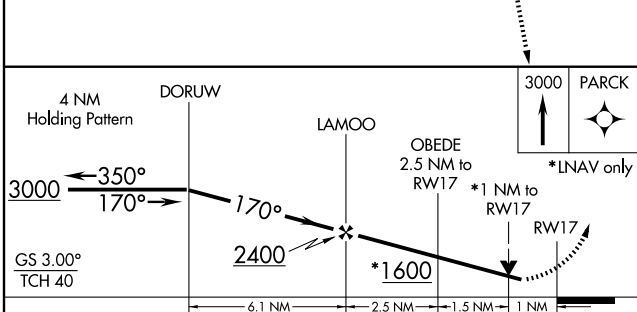
MISSED APPROACH: Climb to 3000 direct PARCK and hold.

AWOS-3 120.775	KANSAS CITY CENTER 135.525 319.9	UNICOM 122.8(CTAF) 0
--------------------------	--	--------------------------------



NC-3, 11 MAR 2010 to 08 APR 2010

NC-3, 11 MAR 2010 to 08 APR 2010



CATEGORY	A	B	C	D
LPV DA	1019-1	250 (300-1)		NA
LNAV/VNAV DA	1079-1¼	310 (400-1¼)		NA
LNAV MDA	1120-1	351 (400-1)		NA
CIRCLING	1260-1	491 (500-1)	1260-1½ 491 (500-1½)	NA

MIRL Rwy 17-35 0
REIL Rwy 17 and 35 0