

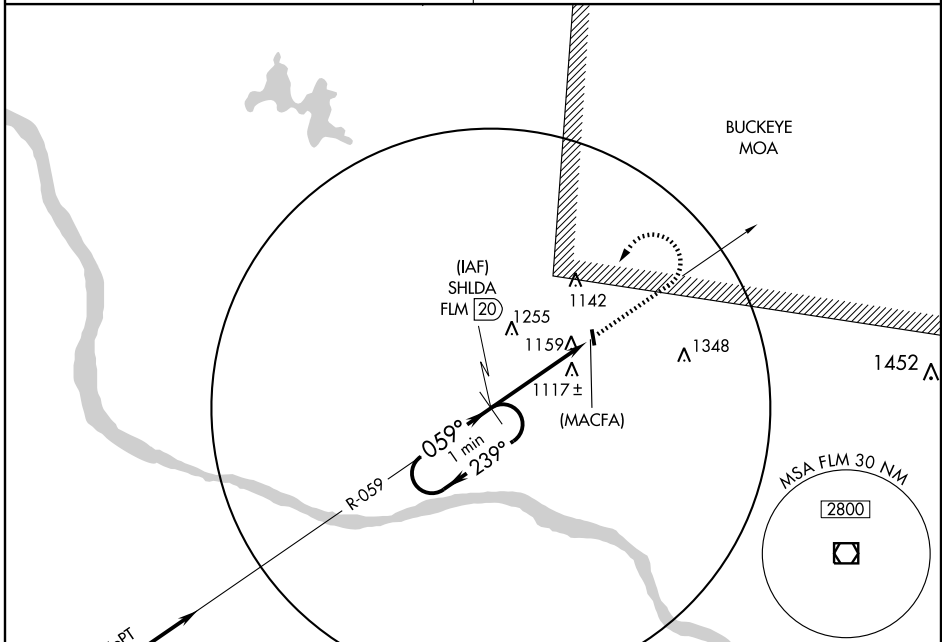
GEORGETOWN, OHIO

AL-6250 (FAA)

VOR/DME FLM 117.0 Chan 117	APP CRS 059°	Rwy Idg TDZE Apt Elev	N/A N/A 957
--	------------------------	-----------------------------	--------------------------

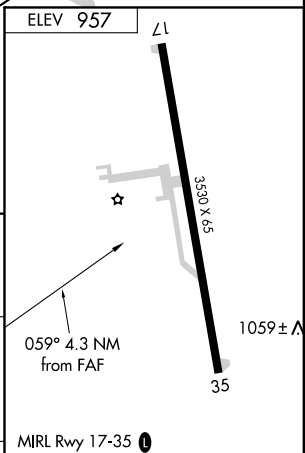
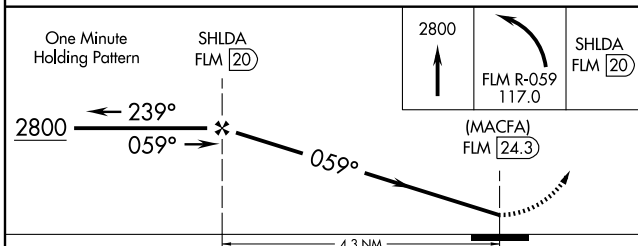
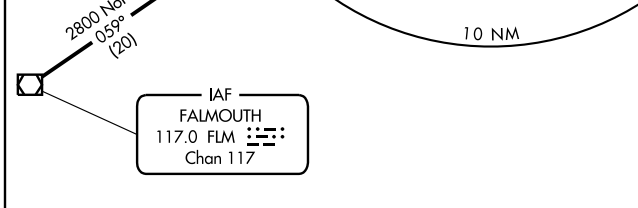
VOR/DME or GPS-A
GEORGETOWN/BROWN COUNTY (GEO)

<p>▼ ▲ NA</p> <p>Use Cincinnati/Northern Kentucky Intl, KY altimeter setting.</p>	<p>MISSED APPROACH: Climb to 2800; then left turn via FLM R-059 to SHLDA 20 DME and hold.</p>
<p>INDIANAPOLIS CENTER 135.575 290.5</p>	<p>CTAF 122.9</p>



EC-2, 19 NOV 2009 to 17 DEC 2009

EC-2, 19 NOV 2009 to 17 DEC 2009



CATEGORY	A	B	C	D	Knots	60	90	120	150	180
CIRCLING	1700-1 743 (800-1)	1700-1¼ 743 (800-1¼)	1700-2¼ 743 (800-2¼)	NA	Min:Sec					

GEORGETOWN, OHIO
Orig 06187

38°53'N - 83°53'W

GEORGETOWN/BROWN COUNTY (GEO)
VOR/DME or GPS-A