

# RNAV (GPS) RWY 4

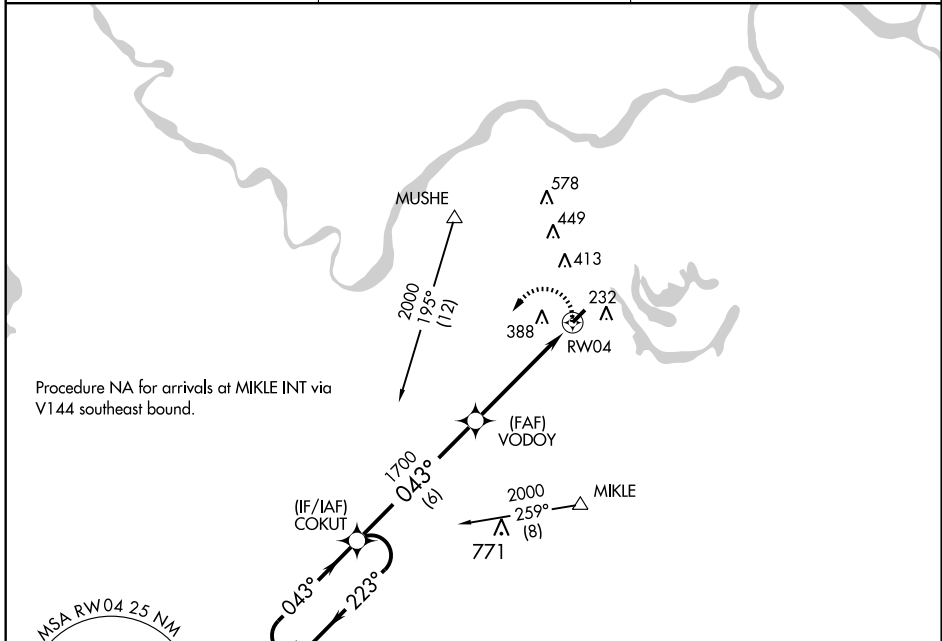
MARKSVILLE MUNI (MKV)

APP CRS <b>043°</b>	Rwy Idg <b>3799</b> TDZE <b>77</b> Apt Elev <b>79</b>
------------------------	---

**NA** DME/DME RNP-0.3 NA. Use Esler Rgnl altimeter setting. If not received, use Alexandria Intl. altimeter setting. When neither is received, procedure not authorized.

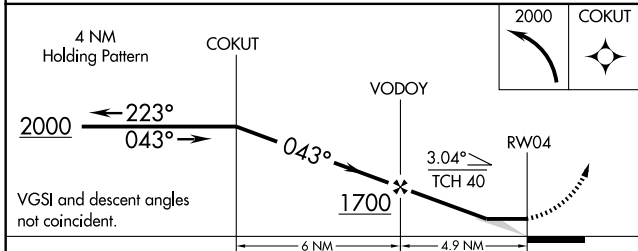
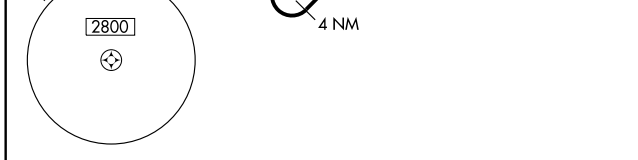
MISSED APPROACH: Climbing left turn to 2000 direct COKUT and hold.

POLK APP CON <b>125.4 302.2</b>	CTAF <b>122.9</b>	<b>122.8 0</b>
------------------------------------	----------------------	----------------



SC-4, 11 MAR 2010 to 08 APR 2010

SC-4, 11 MAR 2010 to 08 APR 2010



CATEGORY	A	B	C	D
LNAV MDA	680-1	603 (700-1)		NA
CIRCLING	760-1	681 (700-1)		NA

