

CHASE CITY, VIRGINIA

AL-6263 (FAA)

RNAV (GPS) RWY 36

CHASE CITY MUNI (CXE)

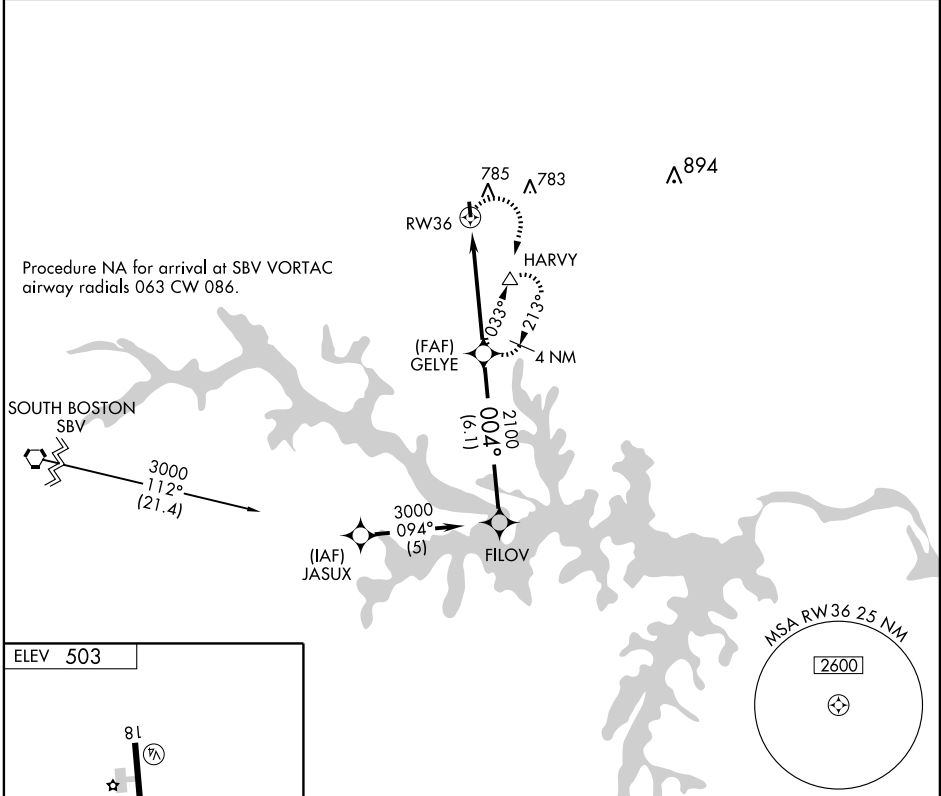
APP CRS	Rwy Idg	3400
004°	TDZE	503
	Apt Elev	503

⚠ DME/DME RNP-0.3 NA. Circling to Rwy 18 NA at night.
⚠ NA Use Mecklenburg-Brunswick altimeter setting; if not received, use Danville altimeter setting and increase all MDA's 60 feet.

MISSED APPROACH: Climbing right turn to 3000 direct HARVY and hold.

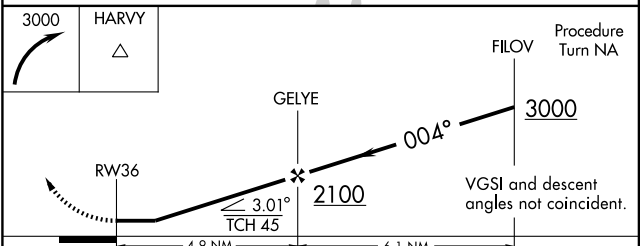
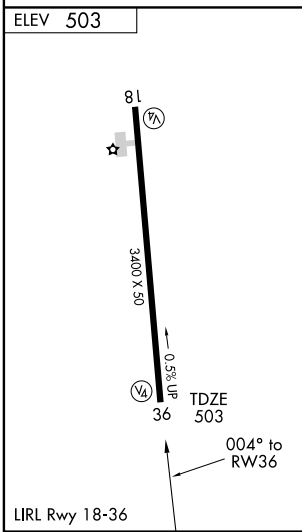
WASHINGTON CENTER
118.75 353.9

UNICOM
122.9 (CTAF)



NE-3, 19 NOV 2009 to 17 DEC 2009

NE-3, 19 NOV 2009 to 17 DEC 2009



CATEGORY	A	B	C	D
RNAV MDA	1040-1	537 (600-1)	1040-1½ 537 (600-1½)	NA
CIRCLING	1200-1	697 (700-1)	1200-2 697 (700-2)	NA

CHASE CITY, VIRGINIA
 Orig-A 08185

36°47'N - 78°30'W

RNAV (GPS) RWY 36