

LAMPASAS, TEXAS

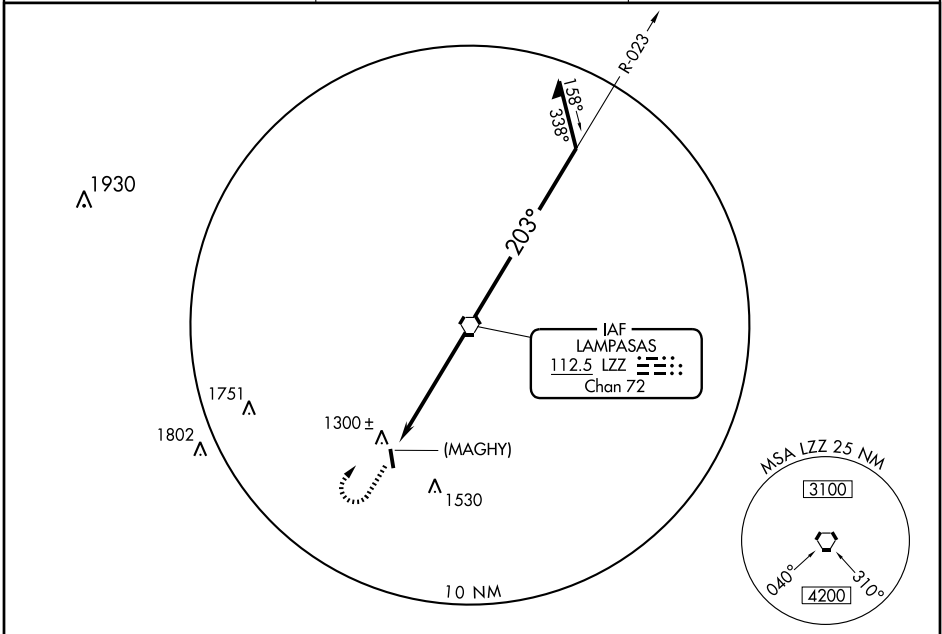
AL-6267 (FAA)

VORTAC LZZ 112.5 Chan 72	APP CRS 203°	Rwy Idg TDZE Apt Elev	N/A N/A 1214
---------------------------------------	------------------------	-----------------------------	---

VOR or GPS-A LAMPASAS (LZZ)

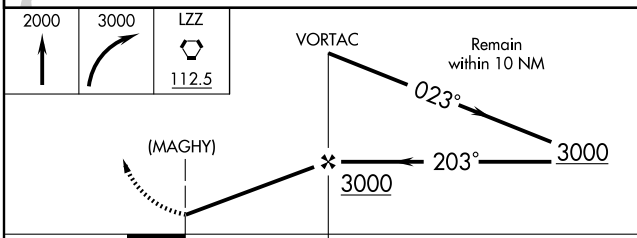
Use Robert Gray AAF altimeter setting. MISSED APPROACH: Climb to 2000 then climbing right turn to 3000 direct LZZ VORTAC.

AWOS-3 119.075	GRAY APP CON 120.075 323.15	UNICOM 122.8 (CTAF)
--------------------------	---------------------------------------	-------------------------------

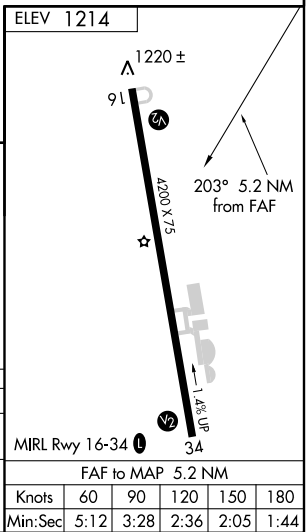


SC-3, 19 NOV 2009 to 17 DEC 2009

SC-3, 19 NOV 2009 to 17 DEC 2009



CATEGORY	A	B	C	D
CIRCLING	1780-1	566 (600-1)	1780-1½ 566 (600-1½)	NA



ELEV 1214					
MIRL Rwy 16-34					
FAF to MAP 5.2 NM					
Knots	60	90	120	150	180
Min:Sec	5:12	3:28	2:36	2:05	1:44

LAMPASAS, TEXAS
Amdt 3 08101

31°06' N-98°12' W

LAMPASAS (LZZ) VOR or GPS-A